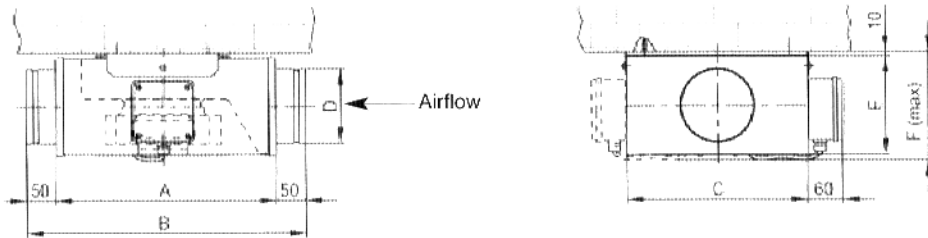


## CLEANING AND MAINTENANCE

1. The motor and the fan impellor should be checked at least every six months of continuous operation.
2. Maintenance must be carried out only by qualified personnel.
3. Before any maintenance or cleaning operation, switch off the fan and disconnect it from the main power supply.
4. Unscrew the bottom motor panel from the body of the fan and remove it without disconnecting the electrical wires.
5. Clean the impellor and the inside part of the fan using a soft brush or a dry cloth.
6. Do not use solvent. Do not put into water.
7. During normal cleaning operations, check the integrity of all appliance parts.

**NOTE: The motor does not require lubrication as it is maintenance free "sealed for life" type.**

## DIMENSIONS



Model	A	B	C	ØD	E	F (Max)	Kg
SBAF125/2	363	463	303	123	163	190	7
SBAF150/2	363	463	303	148	183	210	7.5
SBAF200/2	503	603	373	198	233	260	11.5

## DECLARATION OF CONFORMITY

THE UNDERSIGNED ON BEHALF OF:

Vectaire Ltd  
 Lincoln Road  
 Cressex Business Park  
 High Wycombe, Bucks, HP12 3RH  
 Tel: +44(0)1494 522333. Fax: +44(0)1494 522337. Email: sales@vectaire.co.uk

DECLARES UNDER HIS OWN RESPONSIBILITY THAT THE FOLLOWING PRODUCTS:  
 "SBAF125/2, SBAF150/2, SBAF200/2"

CONFORM TO THE EEC DIRECTIVES:

89/392 EEC, 89/366 EEC, 91/368 EEC, 93/44 EEC, 93/68 EEC.



**VECTAIRE LTD**  
 September 2002

**SLIMBOX**

## "SBAF 2 Speed" ACOUSTIC FANS OPERATION AND MAINTENANCE MANUAL



PLEASE READ THE FOLLOWING INSTRUCTIONS VERY CAREFULLY BEFORE USING THE PRODUCT. THE MANUFACTURER WILL NOT BE HELD RESPONSIBLE AND DECLINES ANY AND ALL LIABILITY FOR DAMAGE CAUSED TO PERSONS OR PROPERTY DUE TO IMPROPER USE WITH REFERENCE TO THE PRECAUTIONS OUTLINED IN THIS MANUAL.  
**THIS MANUAL MUST ALWAYS BE READILY AVAILABLE.**

Fig 1

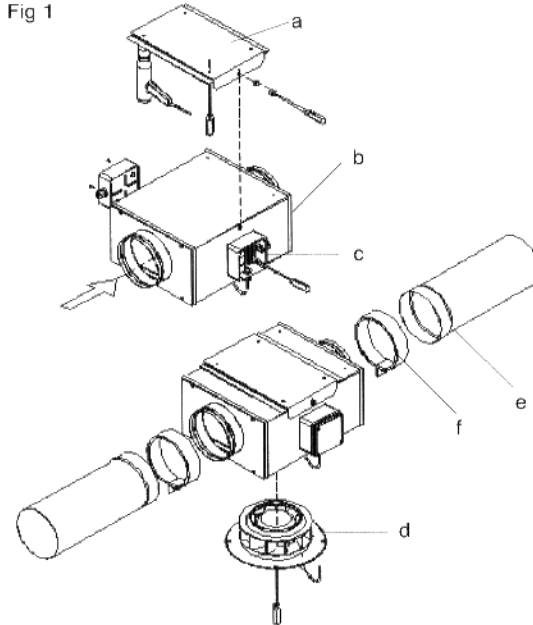


Fig 2

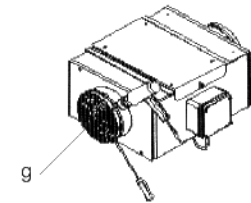
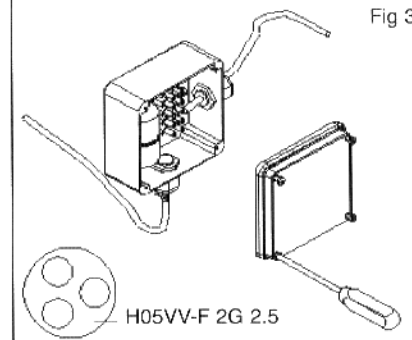


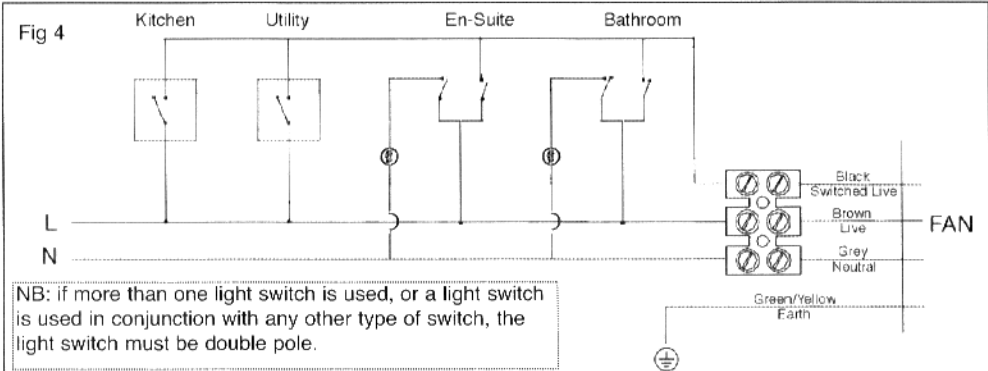
Fig 3



## LEGEND

- |    |                    |    |                           |
|----|--------------------|----|---------------------------|
| a. | Fixing Bracket     | e. | Ducting (not supplied)    |
| b. | Main Body of Fan   | f. | Duct Clamp (not supplied) |
| c. | Connection Box     | g. | Protection Guard          |
| d. | Motor Access Panel |    |                           |

Fig 4



## GENERAL PRECAUTIONS

1. This manual explains how to install correctly, use and carry out maintenance on the product. Following these instructions will ensure that the product will be electrically and mechanically reliable and will extend its working life.
2. Do not use this product for any purpose other than that for which it was designed and as described below.
3. When removing the product from its packaging, make sure that it has not been damaged. If in doubt, immediately contact your supplier. Do not attempt to use or repair the product before contacting Vectaire Ltd.
4. Do not leave packing material within the reach of children or unskilled people. Do not dump any hazardous parts into the environment (polystyrene, plastic, polypropylene, etc.).
5. If the product is dropped or badly knocked, immediately contact qualified personnel (authorised dealer, service centre or manufacturer) to check that the product will still operate correctly.
6. The use of any electrical device requires compliance with some basic rules which are listed below:
  - do not touch the device with wet or moist parts of the body (e.g hands, feet).
  - do not allow the product to be operated by children or unskilled people.
7. Connect the product to the mains electricity supply or electrical outlet only if:
  - your electrical voltage and frequency correspond to those shown on the rating label;
  - the capacity of your electricity supply is sufficient to operate the product at its maximum power.If in doubt, contact a professional electrician.
8. The electrical supply to which the fan is connected must comply with all existing regulations. All installations must comply with current IEE wiring regulations.
9. In order to conserve energy, make sure the fan is used only when necessary.
10. Before carrying out any maintenance or cleaning, switch off the product and disconnect it from the mains electricity supply.
11. If a fault, malfunction or anomaly of any type occurs, isolate the fan (by turning off the switch and by disconnecting it from the mains electricity supply) and immediately contact qualified personnel.
12. Always request original spare parts to effect any repairs.
13. If the product needs to be removed, turn off the mains supply circuit-breaker and then disconnect the fan.
14. The fan should be sited where it is inaccessible to children and/or unskilled people.
15. None of the fans in the range (6 models) weighs more than 20kg. They are, therefore, easily transportable by one person.
16. In order to prevent accidents it is recommended that gloves (or similar protection) be worn whilst moving or installing the fan.
17. The fan **MUST BE** installed as detailed in the **INSTALLATION** section below.
18. The type of cable to be used is shown in Fig 3. Wire the fan as shown in Fig 4 and in the diagram under the connection box cover.
19. Suitable electrical protection must be provided for the model to be installed.
20. **ALL THE FANS IN THIS RANGE MUST BE EARTHED.**
21. If the fan is to be installed with a speed controller, make sure that it is of the correct size and power for the fan being installed.

## SPECIAL PRECAUTIONS

1. This product is professionally manufactured and complies with the current standards regarding electrical equipment.
2. The fans comply with the Low Voltage Directive and with EC Directive EMC 89/336 for the Suppression of Radio Interference.
3. Do not use the product in an ambient temperature higher than 40 °C (104 °F).
4. Do not allow the product to be exposed to atmospheric agents (rain, sun, snow, etc.).
5. Possible product applications are indicated in the attached illustrations.
6. **Do not** place the fan or any part of it in water or other liquids.

7. Routine maintenance should be carried out to check the condition of the fan.
8. To avoid the risk of fire, do not use the product in the presence of flammable substances or vapours such as alcohol, insecticides, petrol, etc.
9. The air or fumes being extracted must be clean and free from greasy particles, soot, chemical and corrosive agents, flammable or explosive mixes (If these substances are to be extracted, contact an authorised dealer for specific range of explosion-proof products).
10. **The product must be installed by professionally qualified personnel. Incorrect installation can cause damage to people, animals or property, for which the manufacturer cannot be held liable.**
11. The product must be connected to the electricity supply via a double pole switch of a suitable size, with contact openings of at least 3 mm.
12. If the electrical supply board (or switching device) is located some distance from the fan a means of local isolation must be provided.
13. To ensure optimum operation, do not block the air intake and exit vents.
14. Any ducting used must be free of blockages.
15. If used for extraction, the room where the fan is operating must have adequate air replacement to ensure maximum effectiveness.
16. If the product is sited in a room containing a fuel burning appliance which is not of the balanced flue type, the installer must ensure that air replacement is adequate both for the fan and the fuel burning appliance.
17. The fan should not be used as an activator for water heaters, stoves, etc.
18. The fan must not exhaust into ducts designed to evacuate fumes from combustion in stoves or other combustion-powered devices.

## INSTALLATION

### Installation must be carried out by duly qualified personnel.

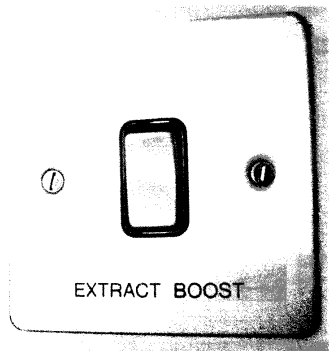
1. Remove the fan from the box, taking care to dispose of the packing material properly.
2. Check the location of existing wiring for ease of connection. If necessary, the connection box can be dismantled and fitted on the opposite side of the fan.
3. Dismantle the fixing bracket from the main body of the fan.
4. Fasten the fixing bracket to the ceiling, using screws and wall plugs (not supplied) or by any other suitable method.
5. Fix the fan to the bracket.
6. Carry out wiring according to Fig.4 and to the diagram under the connection box cover. The type of cable to be used is shown in Fig. 3. The cable clamp must be used to fix the cable in the correct position.
7. **ALL THE FANS IN THIS RANGE MUST BE EARTHED.**
8. Connect to the electricity supply via a multi pole switch of a suitable size, with contact openings of at least 3 mm.
9. The fan runs at low speed when "Live" and "Neutral" are connected. It can be boosted to high speed by connecting the "Switched Live"
10. Check that wires and connections are firmly secured, close the connection box and test the fan, checking that:
  - the rotation direction is correct, i.e. according to that indicated.
  - the absorbed current corresponds to that shown on the rating label.
  - there is no excessive vibration.
11. If the fan works properly, connect the fan spigots to the ducting. Ensure that the ducting is firmly secured to the fan.
12. Should the appliance be installed with one spigot not connected to a duct, a protection guard **MUST** be installed to prevent access to moving parts (see Fig.2).
13. When the "SL" (the boost speed) is switched off, the fan will continue to operate for a pre-set length of time (adjustable to a maximum of 15 minutes)

### Apartment Extract Ventilation

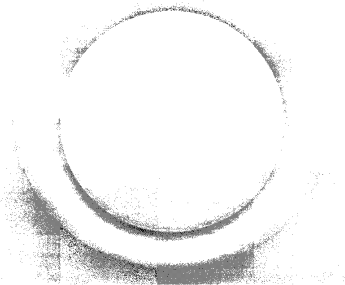
Your toilet, bathroom and kitchen are provided with extract ventilation by means of a fan unit located in the services cupboard at high level.

Ceiling mounted extract valves are connected by ductwork within the ceiling to the fan unit, and draw air from each space. The extracted air is passed through a further section of ducting to be expelled outside the apartment through an external wall mounted louvre.

The fan unit operates continuously at very low speed, and is provided with a wall mounted speed/boost control unit in the hall. Fresh air passes into your apartment by manually operated trickle vents incorporated in the perimeter glazing.



Fan Boost Switch

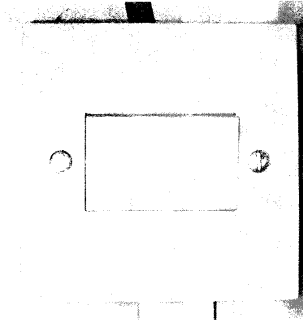


Extract Valve

#### NOTE:

The boost switch should be operated when cooking or when toilets and baths are in use.

### Extract Ventilation System



A wall mounted electrical power isolation switch, located in the cupboard local to the fan unit, is provided to disconnect electrical power to the fan unit. This is provided not only for isolation during maintenance procedures, but also for tenants use in any emergency situation, i.e. unusual noises or smells suspected to be associated with the fan unit.