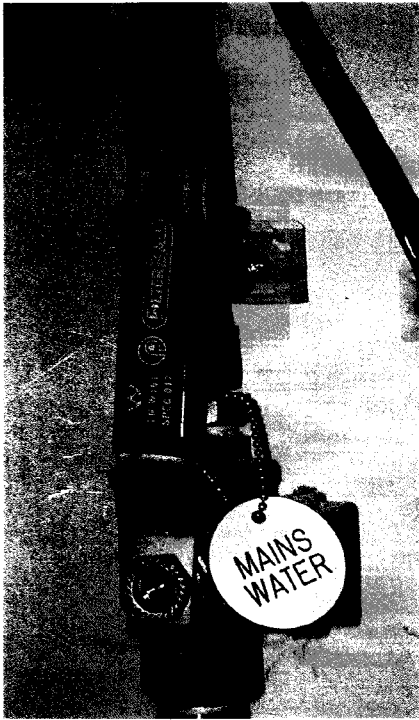


SECTION 4 - KEY LOCATIONS

Cold Water Supply

Your apartment is provided with a cold water supply from a central source within the building.



Your supply is furnished with a main isolation lever which isolates cold water supplies to your bath, wash hand basin, toilet, kitchen sink and other water utilising appliances. The isolation valve is located in the services cupboard and is provided with a "MAINS WATER" tag identifying the valve.

NOTE:

To isolate the cold water supply, turn the level in a clockwise direction until the lever is horizontal compared to the vertical running pipework. The cold water supplies to the bath, toilet, wash hand basin and kitchen will be isolated and should not be used once isolated.

Hot Water Supply

Your apartment is provided with a hot water supply from a central source within the building.



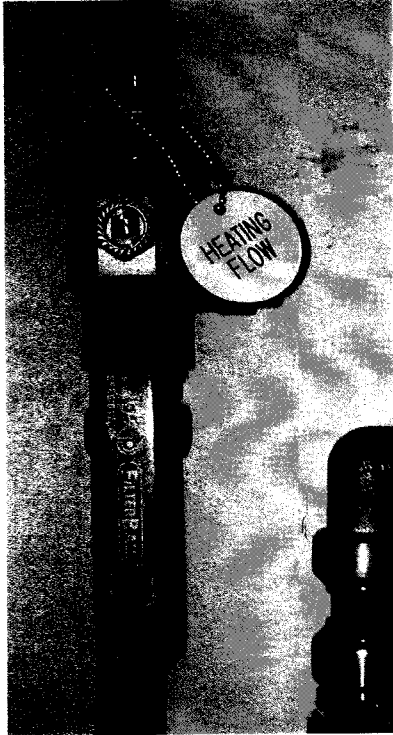
Your supply is furnished with a main isolation lever which isolates hot water supplies to your bath, wash hand basin, kitchen sink and other water utilising appliances. The isolation valve is located in the services cupboard and is provided with a "HOT WATER" tag identifying the valve.

NOTE:

To isolate the hot water supply, turn the level in a clockwise direction until the lever is horizontal compared to the vertical running pipework. The hot water supplies to the bath, toilet, wash hand basin and kitchen will be isolated and should not be used once isolated.

LPHW Heating Supply

Your apartment is provided with a hot water supply from a central source within the building.



The heating system is furnished with 2 No. isolation levers which isolate the LPHW supplies to your manifold. The isolation valves are located in the services cupboard and are provided with a “HEATING FLOW” and a “HEATING RETURN” tag identifying the valves.

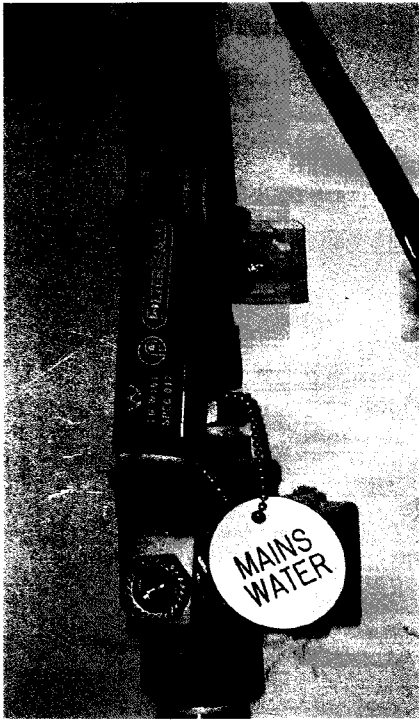
NOTE:

To isolate the LPHW heating system supply, turn the level in a clockwise direction until the lever is horizontal compared to the vertical running pipework. The LPHW supply to the radiator manifold will be isolated.

SECTION 4 - KEY LOCATIONS

Cold Water Supply

Your apartment is provided with a cold water supply from a central source within the building.



Your supply is furnished with a main isolation lever which isolates cold water supplies to your bath, wash hand basin, toilet, kitchen sink and other water utilising appliances. The isolation valve is located in the services cupboard and is provided with a "MAINS WATER" tag identifying the valve.

NOTE:

To isolate the cold water supply, turn the lever in a clockwise direction until the lever is horizontal compared to the vertical running pipework. The cold water supplies to the bath, toilet, wash hand basin and kitchen will be isolated and should not be used once isolated.

Hot Water Supply

Your apartment is provided with a hot water supply from a central source within the building.



Your supply is furnished with a main isolation lever which isolates hot water supplies to your bath, wash hand basin, kitchen sink and other water utilising appliances. The isolation valve is located in the services cupboard and is provided with a "HOT WATER" tag identifying the valve.

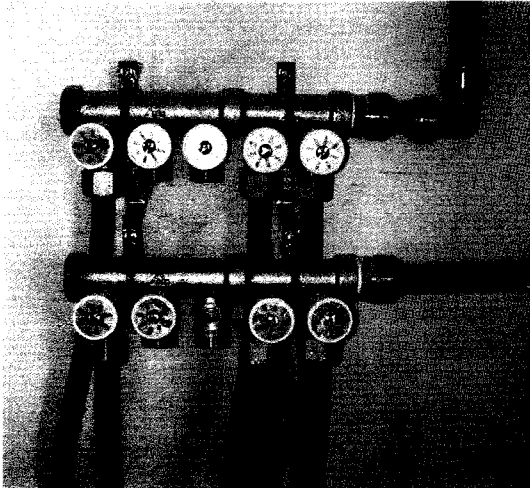
NOTE:

The pipework used for the water services is of the copper type. Caution should be taken when penetrating the walls within your apartment due to pipework being run through the wall space. An electronic copper finder should be used before any penetration to determine if it is safe to do so.

Heating

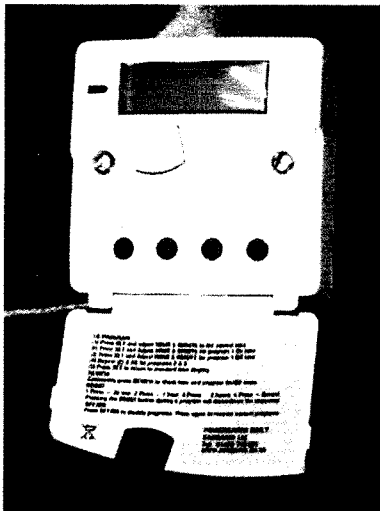
Your apartment is heated by means of a low pressure hot water heating system, comprising wall mounted radiators and towel rails.

The radiators and towel rails are fed from the incoming Low Pressure Hot Water (LPHW) manifold located in the services cupboard.



LPHW Manifold In Services Cupboard

The heating is controlled by means of a 3 port control valve and wall mounted Timeclock.



The timeclock is utilised to set the desired heating times while the 3 port control valve works constantly to attain and maintain the set temperature.

NOTE:

The 3 port control valve is fully automatic and requires no user interface. The temperature is set via the radiator (TRV) mounted thermostat.



The heating system is furnished with 2 No. isolation levers which isolate the LPHW supplies to your manifold. The isolation valves are located in the services cupboard and are provided with a "HEATING FLOW" and a "HEATING RETURN" tag identifying the valves.

NOTE:

The heating systems pipework is run underneath the floor board, extreme care should be taken before any penetration works on the floor commences.