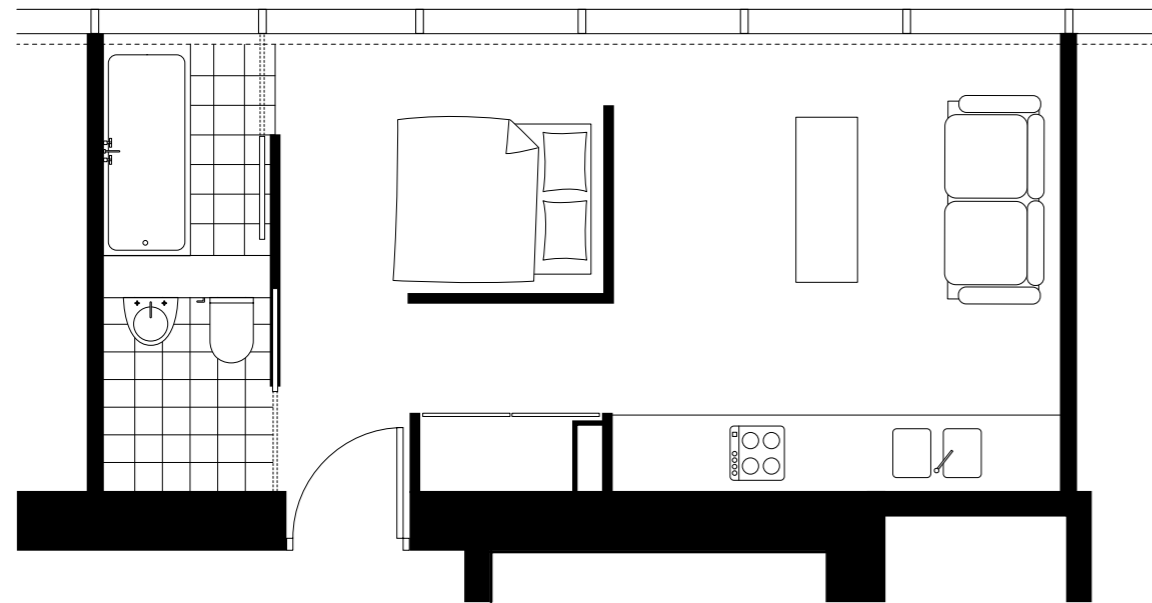


## Beetham Tower Studio Apartment

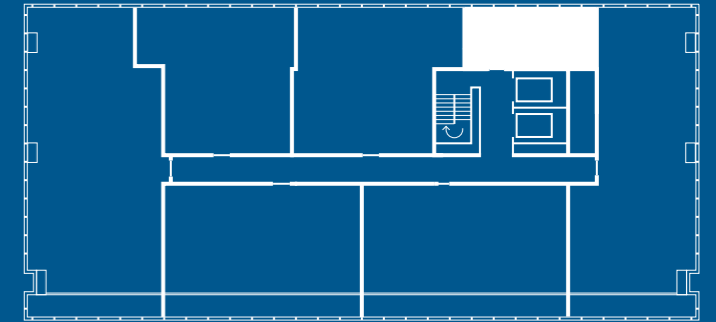


### Studio Apartment

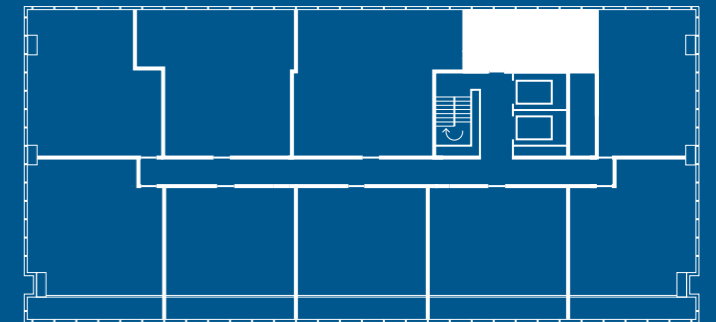
*Studio apartment with views over Manchester City Centre.  
Floors 25 - 46*

## Key to Floorplates

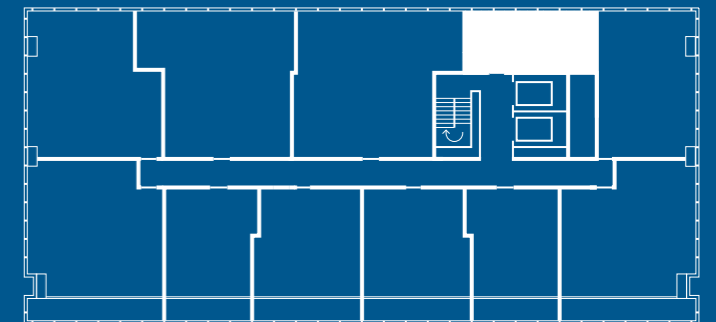
Levels 42 - 46  
Apartments 4201 - 4601



Levels 38 - 41  
Apartments 3801 - 4101



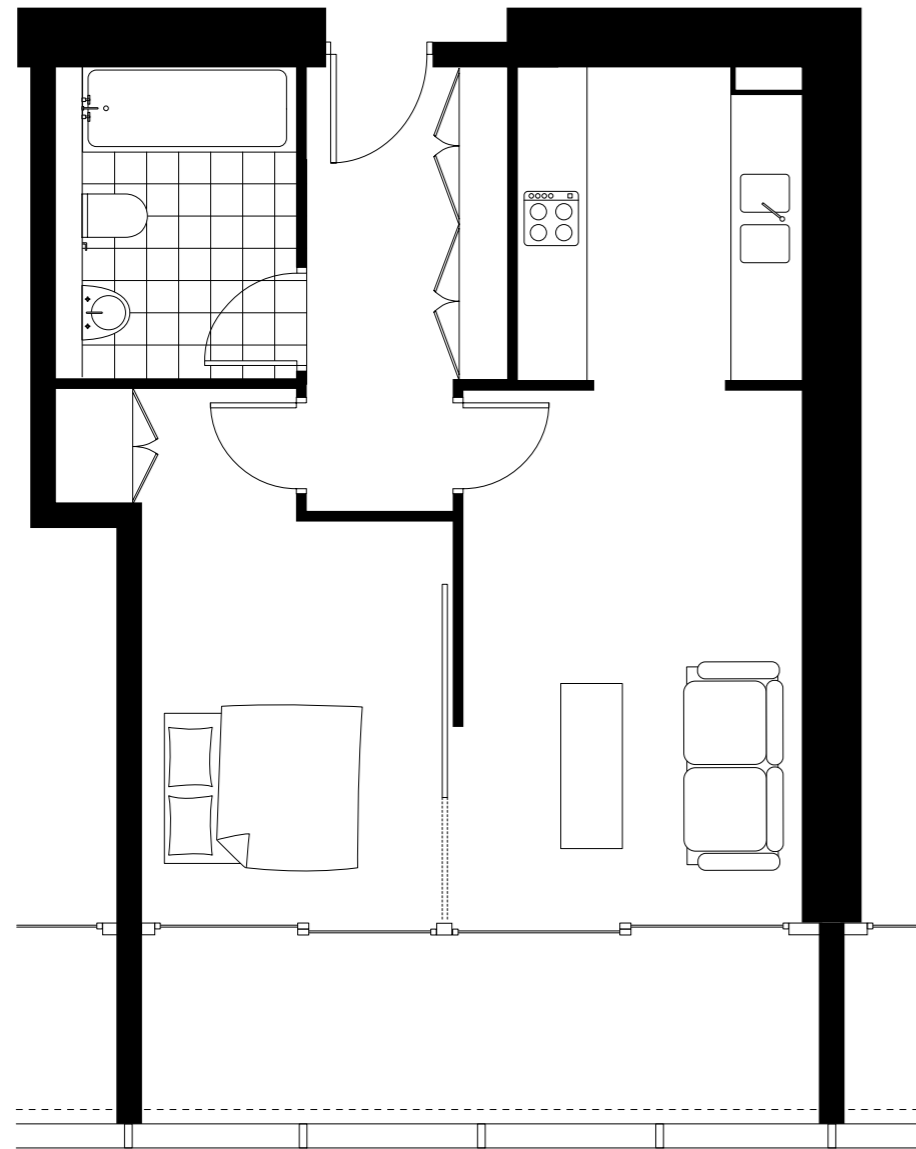
Levels 25 - 37  
Apartments 2501 - 3701



## Apartment Schedule

Living & Kitchen	3.5m x 3.7m	11' 06" x 12' 02"
Bedroom	2.8m x 2.1m	09' 02" x 06' 11"
Bathroom	1.3m x 1.8m	04' 03" x 05' 11"
WC	1.3m x 1.5m	04' 03" x 04' 11"

## Beetham Tower 1 Bedroom Apartment

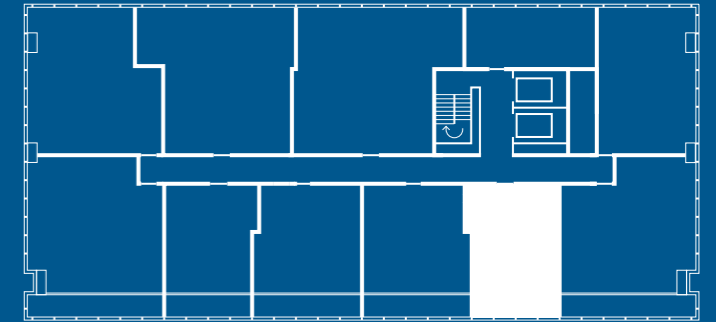


### 1 Bed Apartment

1 Bedroom apartment, South facing with internal terrace.  
Levels 25 - 37

## Key to Floorplates

Levels 25 - 37  
Apartments 2504 - 3704

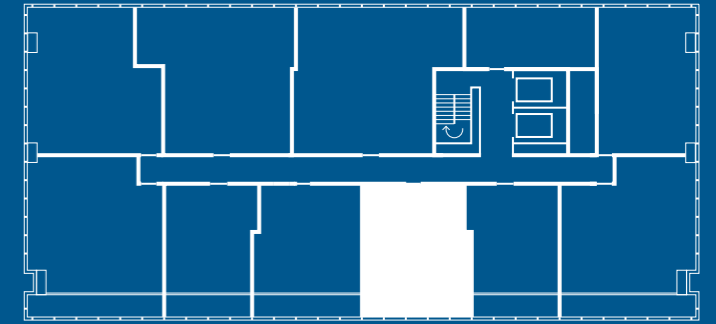


## Apartment Schedule

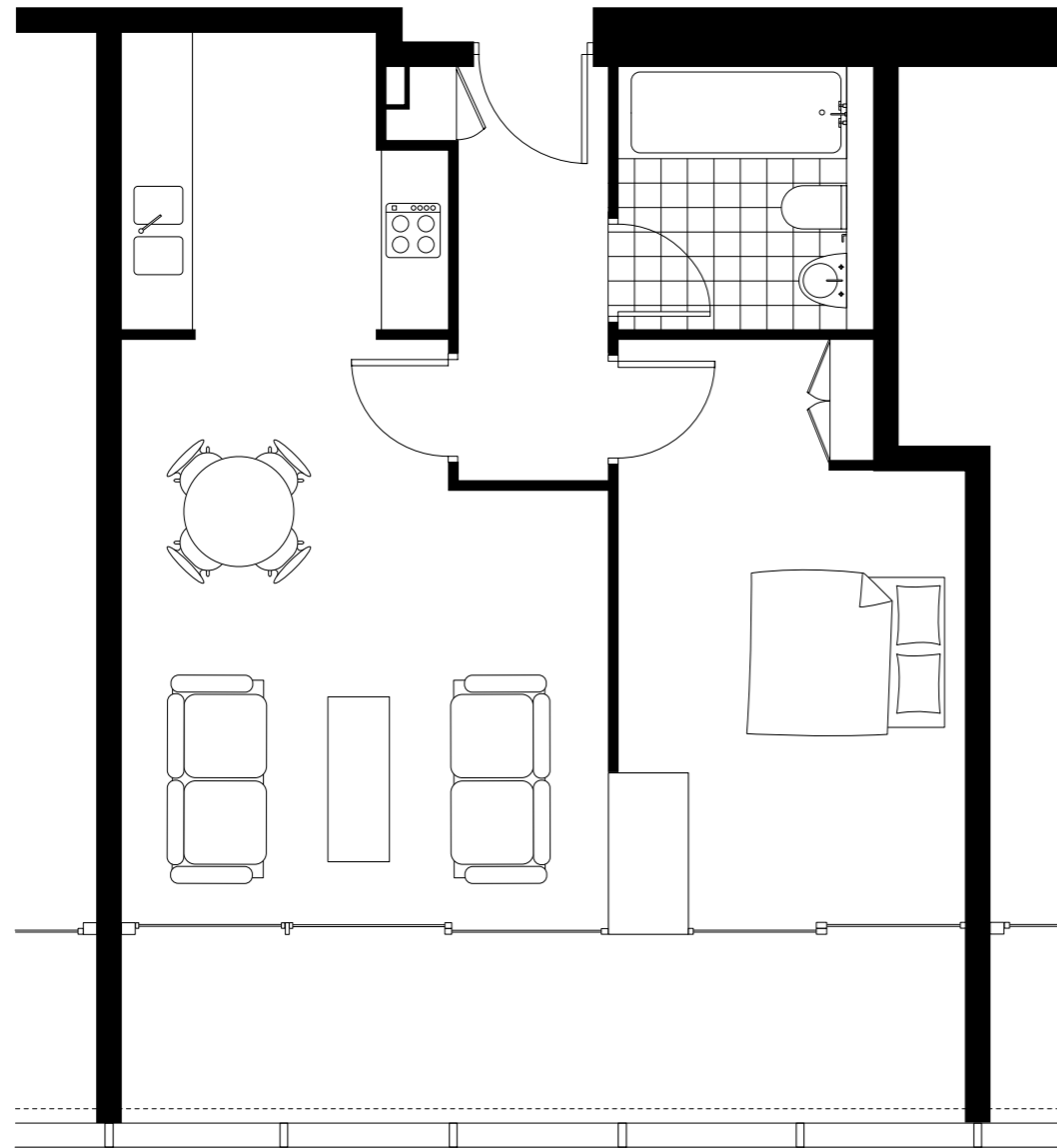
Living	2.9m x 4.5m	09' 06" x 14' 09"
Kitchen	2.5m x 2.5m	08' 02" x 08' 02"
Bedroom (inc. dressing)	2.5m x 4.5m	08' 02" x 14' 09"
Bathroom	1.7m x 2.5m	05' 07" x 08' 02"
Terrace	5.7m x 1.5m	18' 08" x 05' 03"

## Beetham Tower 1 Bedroom Apartment

## Key to Floorplates



Levels 25 - 37  
Apartments 2505 - 3705



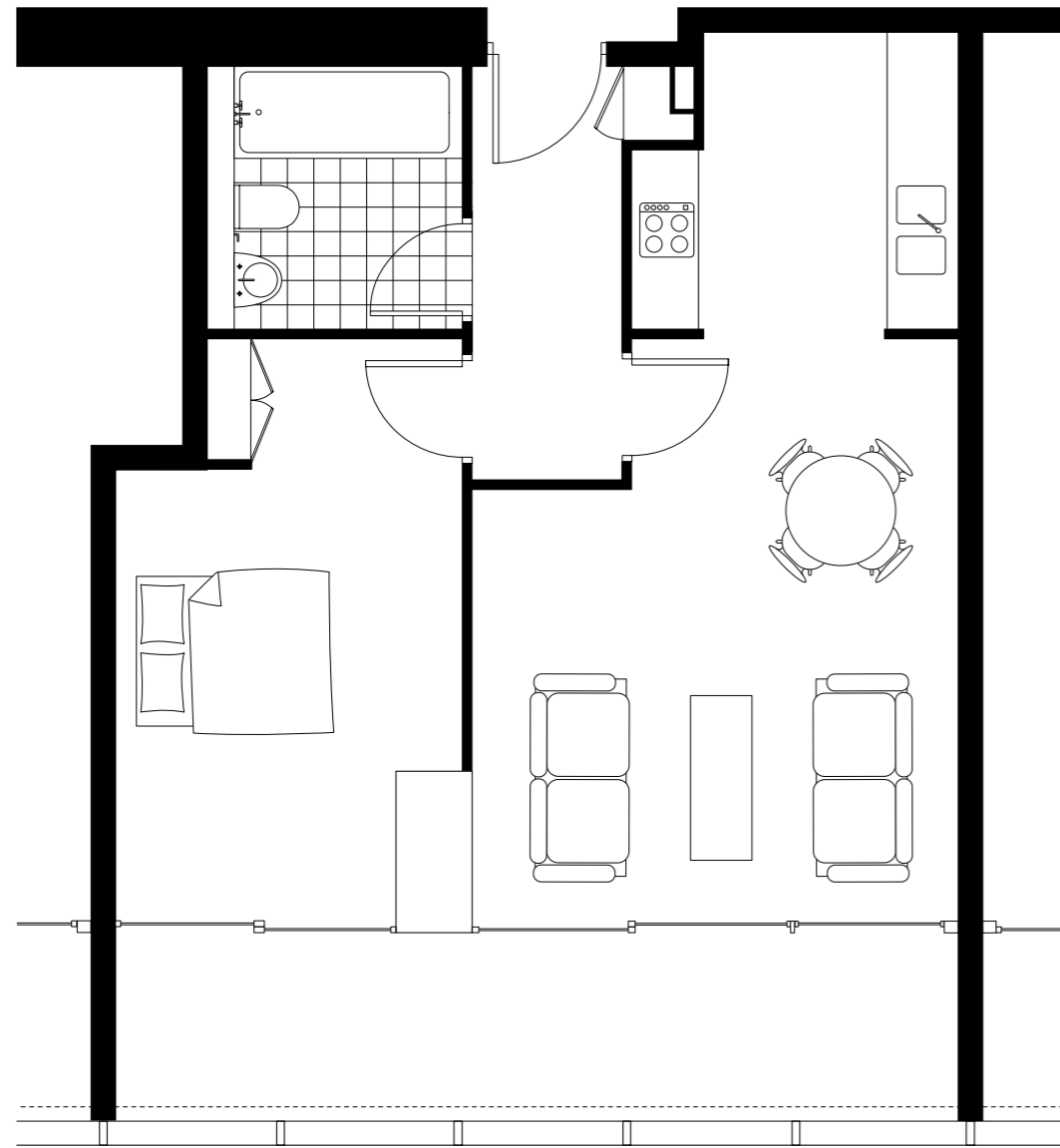
## 1 Bed Apartment

1 Bedroom apartment, South facing with internal terrace.  
Levels 25 - 37

## Apartment Schedule

Living	4.0m x 4.8m	13' 01" x 15' 09"
Kitchen	2.6m x 2.5m	08' 06" x 08' 02"
Bedroom (inc. dressing)	2.8m x 4.5m	09' 02" x 14' 09"
Bathroom	2.4m x 2.5m	07' 10" x 08' 02"
Terrace	7.0m x 1.5m	22' 12" x 04' 11"

## Beetham Tower 1 Bedroom Apartment

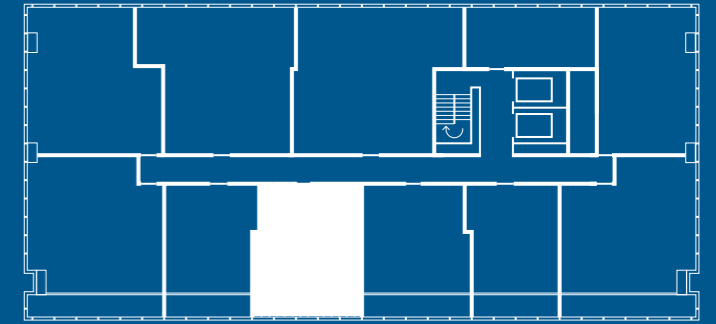


### 1 Bed Apartment

1 Bedroom apartment, South facing with internal terrace.  
Levels 25 - 37

## Key to Floorplates

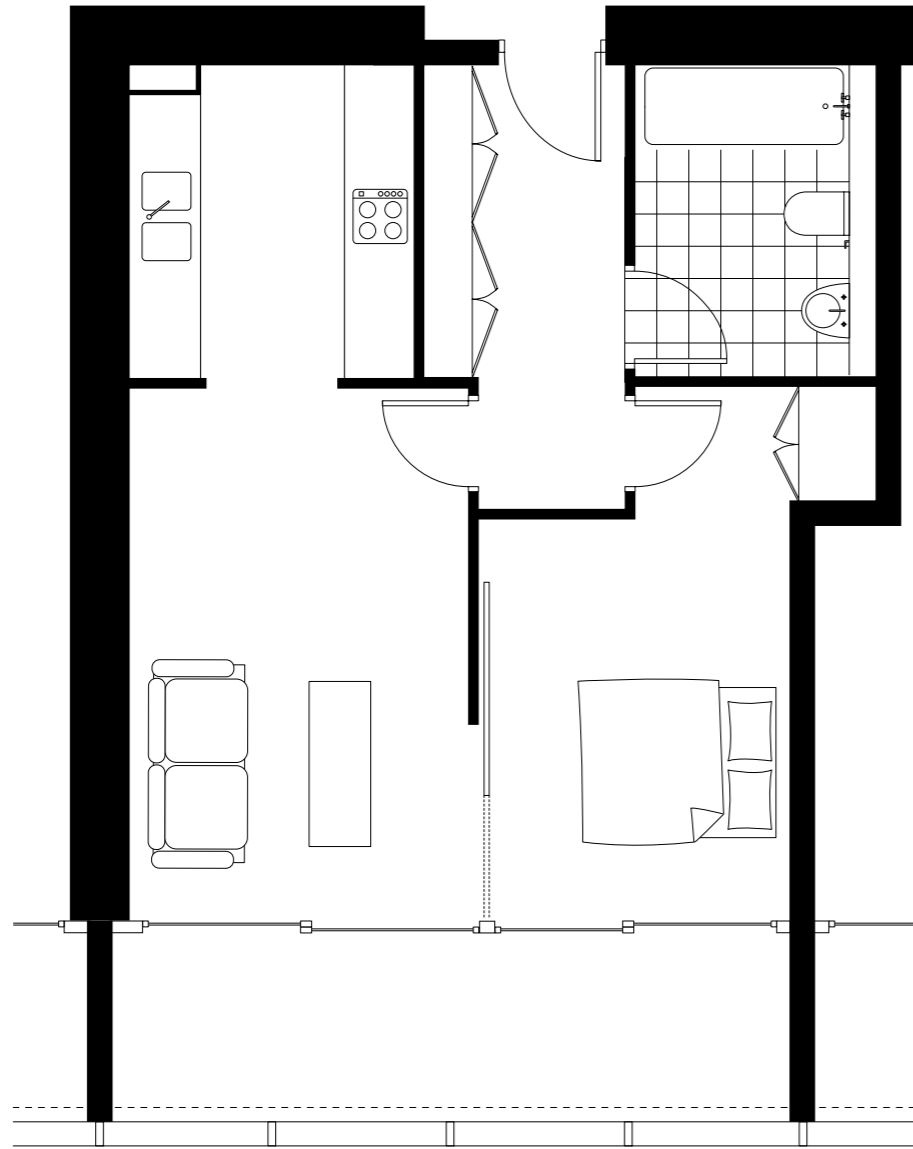
Levels 25 - 37  
Apartments 2506 - 3706



## Apartment Schedule

Living	4.0m x 4.8m	13' 01" x 15' 09"
Kitchen	2.6m x 2.5m	08' 06" x 08' 02"
Bedroom (inc. dressing)	2.8m x 4.5m	09' 02" x 14' 09"
Bathroom	2.4m x 2.5m	07' 10" x 08' 02"
Terrace	7.0m x 1.5m	22' 12" x 04' 11"

## Beetham Tower 1 Bedroom Apartment

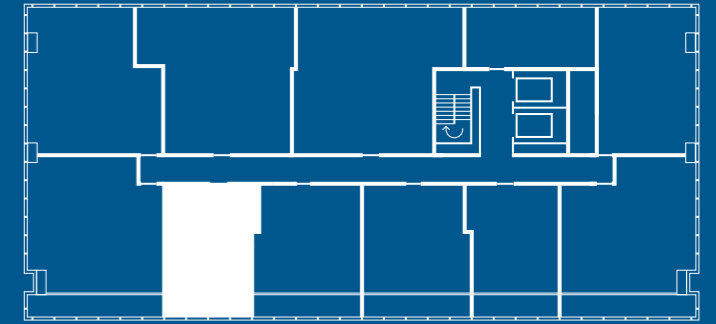


### 1 Bed Apartment

1 Bedroom apartment, South facing with internal terrace.  
Levels 25 - 37

## Key to Floorplates

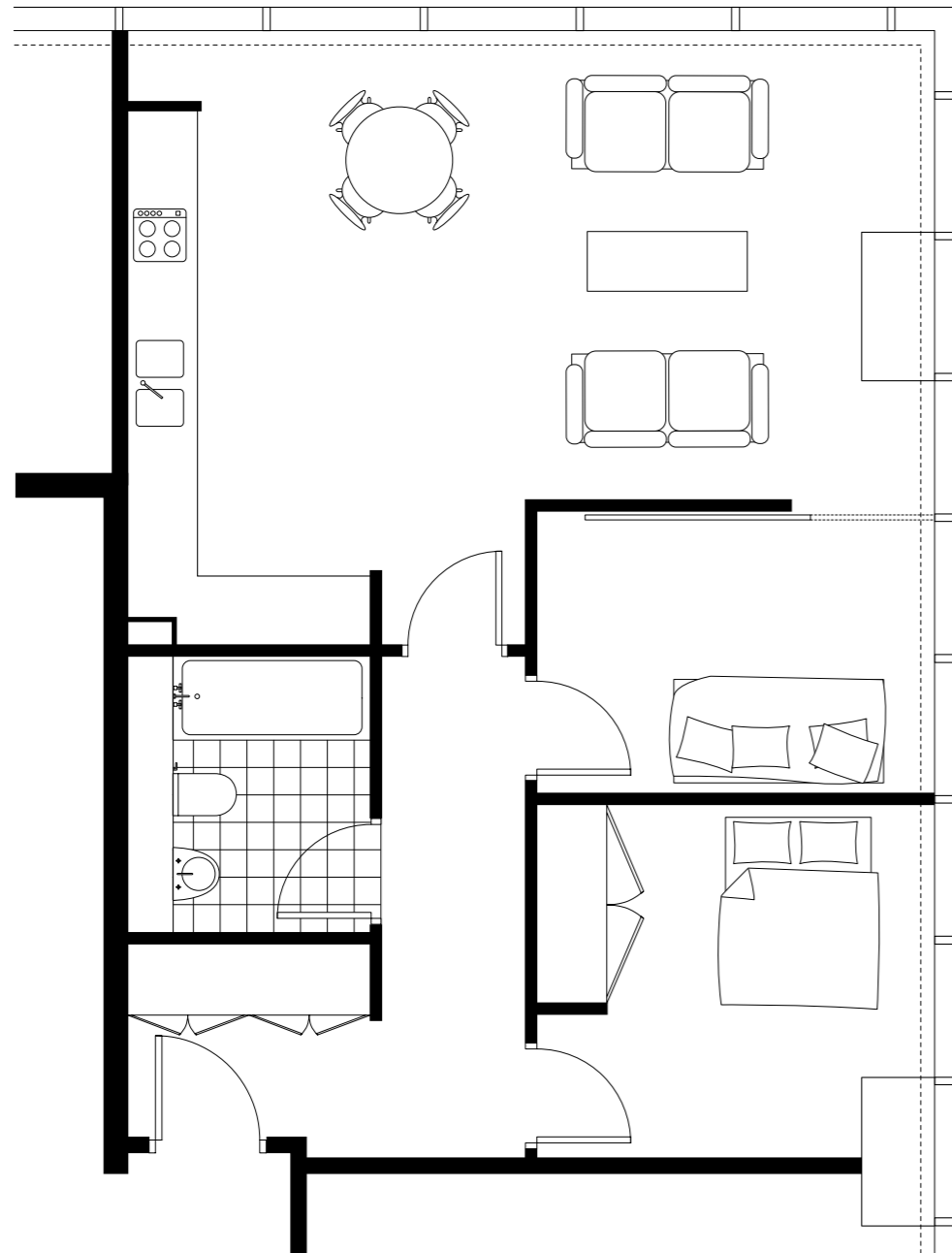
Levels 25 - 37  
Apartments 2507 - 3707



## Apartment Schedule

Living	2.9m x 4.5m	09' 06" x 14' 09"
Kitchen	2.5m x 2.5m	08' 02" x 08' 02"
Bedroom (inc. dressing)	2.5m x 4.5m	08' 02" x 14' 09"
Bathroom	1.7m x 2.5m	05' 07" x 08' 02"
Terrace	5.7m x 1.5m	18' 08" x 05' 03"

## Beetham Tower 2 Bedroom Apartment

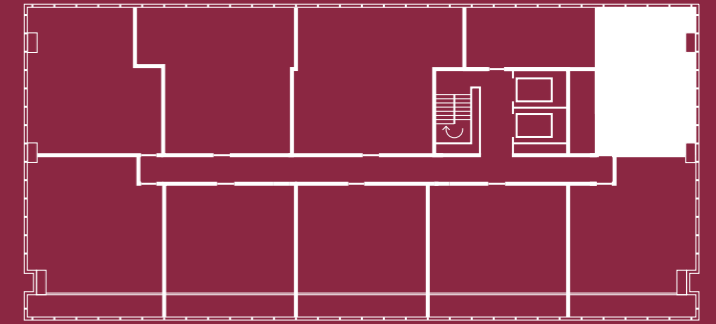


### 2 Bed Apartment

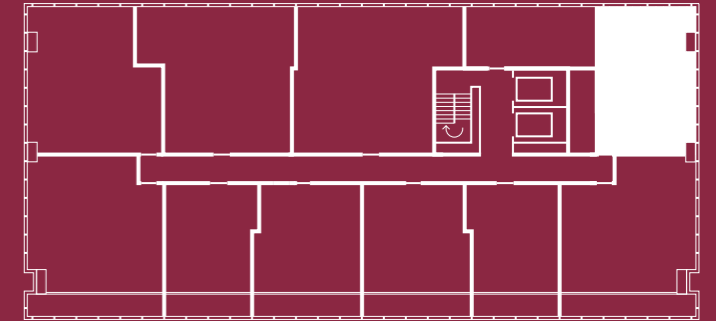
2 Bedroom apartment, with views East, and North over Manchester City Centre.  
Levels 25 - 41

## Key to Floorplates

Levels 38 - 41  
Apartments 3802 - 4102



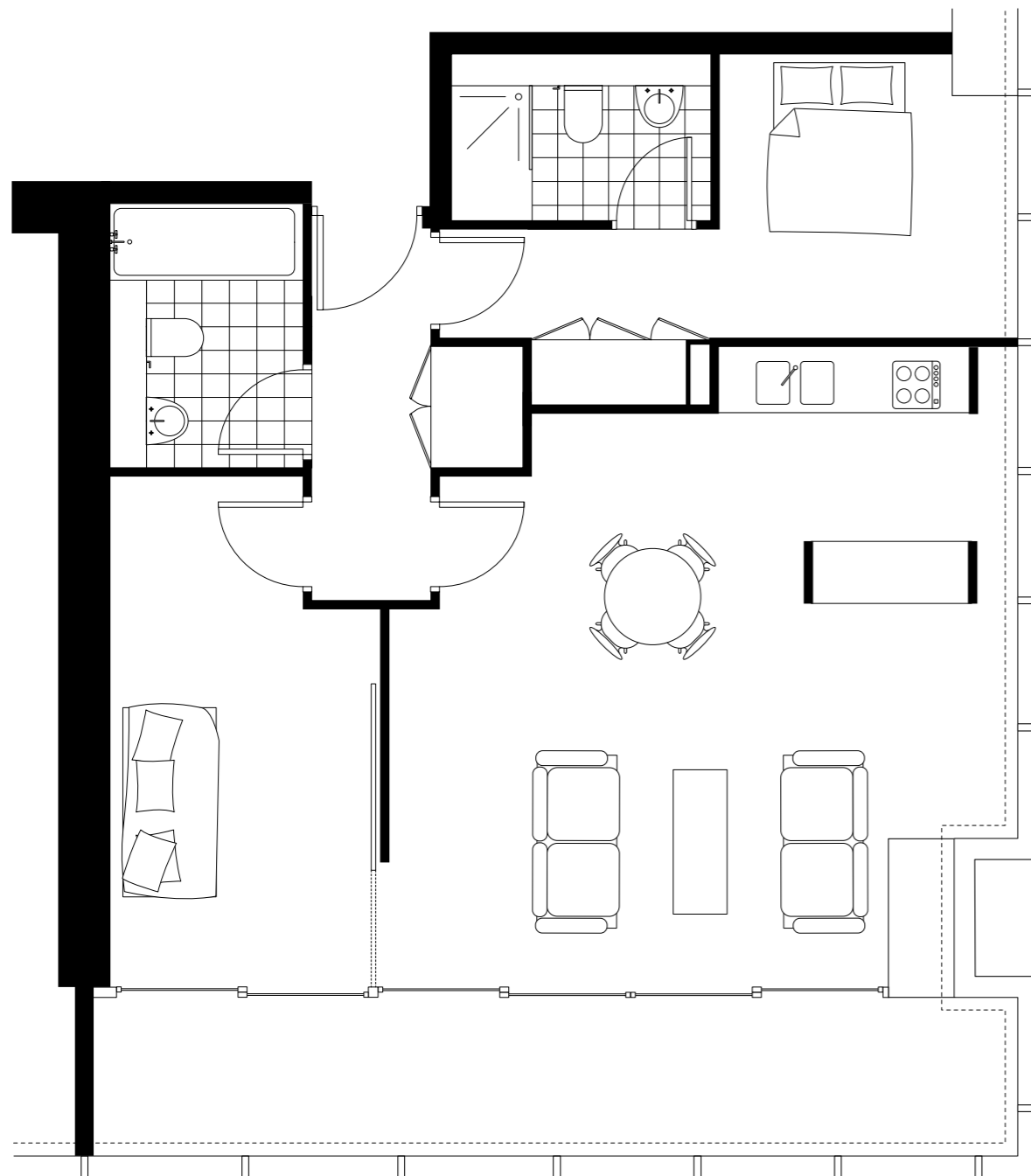
Levels 25 - 37  
Apartments 2502 - 3702



## Apartment Schedule

Living & Kitchen	7.0m x 5.0m	22' 12" x 16' 05"
Main Bedroom	3.4m x 3.0m	11' 02" x 09' 10"
Bathroom	1.7m x 2.5m	05' 07" x 08' 02"
Bedroom 2	3.4m x 2.4m	11' 02" x 07' 10"

## Beetham Tower 2 Bedroom Apartment

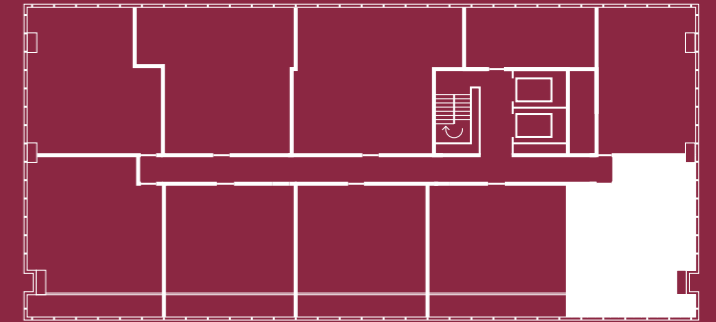


### 2 Bed Apartment

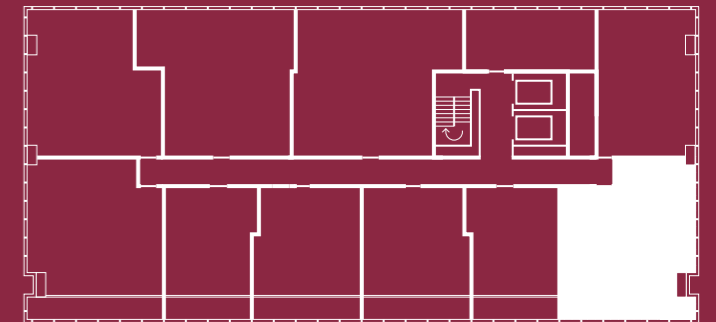
2 Bedroom, 2 Bathroom apartment, with South facing internal terrace and views South & East.  
Levels 25 - 41

## Key to Floorplates

Levels 38 - 41  
Apartments 3803 - 4103



Levels 25 - 37  
Apartments 2503 - 3703



## Apartment Schedule

Living & Kitchen	5.8m x 6.0m	19' 00" x 19' 08"
Main Bedroom	2.9m x 2.7m	09' 06" x 08' 10"
En-Suite	2.3m x 1.2m	07' 07" x 03' 11"
Bedroom 2	2.5m x 4.7m	08' 02" x 15' 05"
Bathroom 2	1.7m x 2.6m	05' 07" x 08' 06"
Terrace	8.7m x 1.5m	28' 07" x 04' 11"

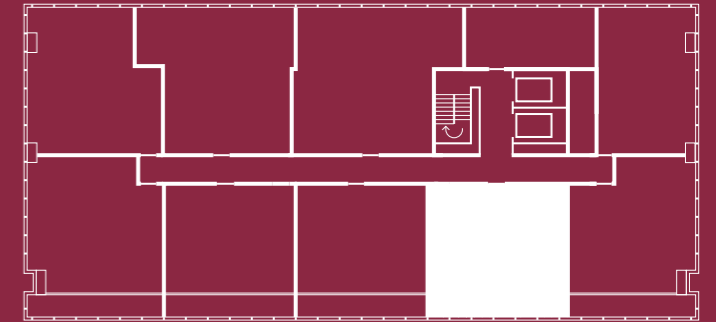
## Beetham Tower 2 Bedroom Apartment



### 2 Bed Apartment

2 Bedroom, 2 Bathroom apartment, South facing with internal terrace.  
Levels 38 - 41

## Key to Floorplates



Levels 38 - 41  
Apartments 3804 - 4104

## Apartment Schedule

Living	2.9m x 4.5m	09' 06" x 14' 09"
Kitchen	2.3m x 2.5m	07' 07" x 08' 02"
Main Bedroom	2.8m x 4.4m	09' 02" x 14' 05"
En-Suite	2.0m x 2.4m	06' 07" x 07' 10"
Bedroom 2	2.5m x 3.2m	08' 02" x 10' 06"
Bathroom 2	1.7m x 2.4m	05' 07" x 07' 10"
Terrace	8.6m x 1.5m	28' 03" x 04' 11"



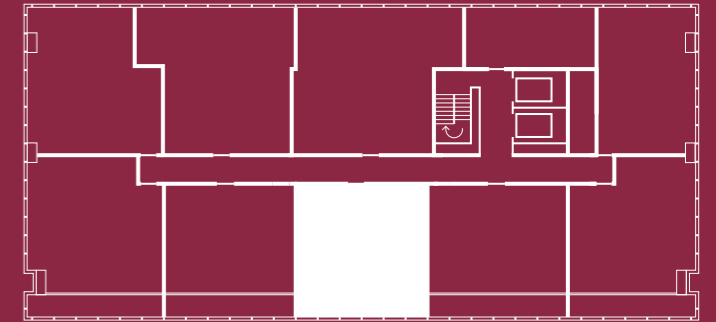
**Beetham Tower** 2 Bedroom Apartment



**2 Bed Apartment**

*2 Bedroom, 2 Bathroom apartment, South facing with internal terrace.  
Levels 38 - 41*

**Key to Floorplates**



Levels 38 - 41  
Apartments 3805 - 4105

**Apartment Schedule**

Living	2.8m x 4.5m	09' 02" x 14' 09"
Kitchen	2.3m x 2.7m	07' 07" x 08' 10"
Main Bedroom	2.6m x 4.4m	08' 06" x 14' 05"
En-Suite	1.8m x 2.7m	05' 11" x 08' 10"
Bedroom 2	2.5m x 3.1m	08' 02" x 10' 02"
Bathroom 2	1.7m x 2.7m	05' 07" x 08' 10"
Terrace	8.2m x 1.5m	26' 11" x 04' 11"

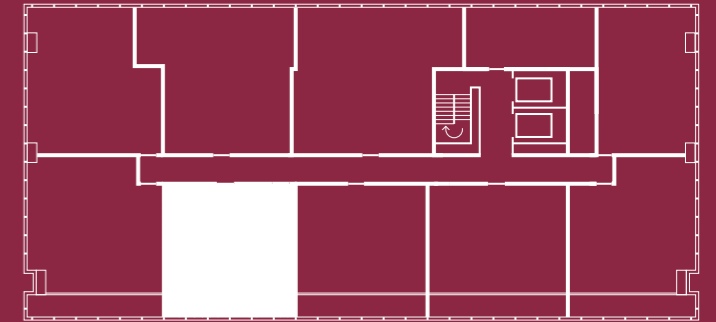
## Beetham Tower 2 Bedroom Apartment



### 2 Bed Apartment

2 Bedroom, 2 Bathroom apartment, South facing with internal terrace.  
Levels 38 - 41

## Key to Floorplates

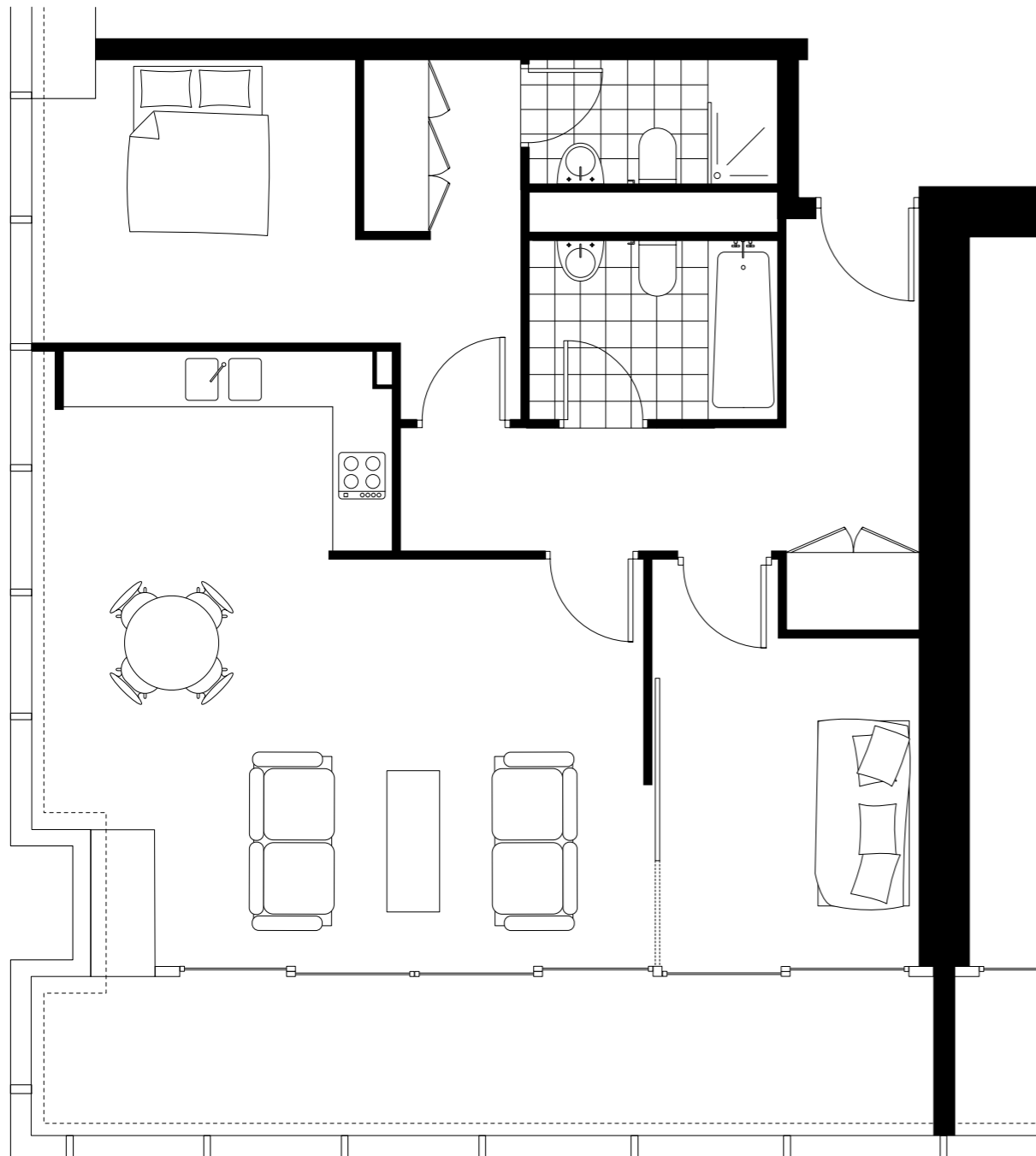


Levels 38 - 41  
Apartments 3806 - 4106

## Apartment Schedule

Living	2.9m x 4.5m	09' 06" x 14' 09"
Kitchen	2.3m x 2.5m	07' 07" x 08' 02"
Main Bedroom	2.8m x 4.4m	09' 02" x 14' 05"
En-Suite	2.0m x 2.4m	06' 07" x 07' 10"
Bedroom 2	2.5m x 3.2m	08' 02" x 10' 06"
Bathroom 2	1.7m x 2.4m	05' 07" x 07' 10"
Terrace	8.6m x 1.5m	28' 03" x 04' 11"

## Beetham Tower 2 Bedroom Apartment

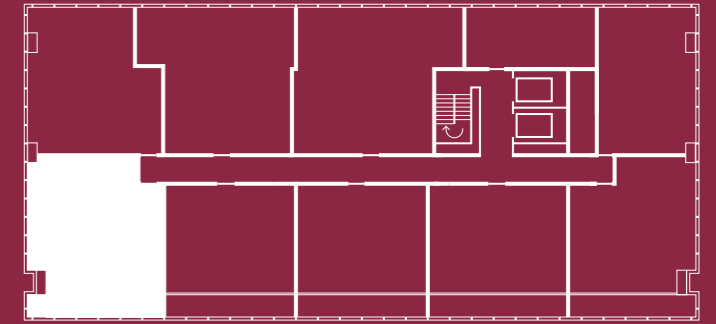


### 2 Bed Apartment

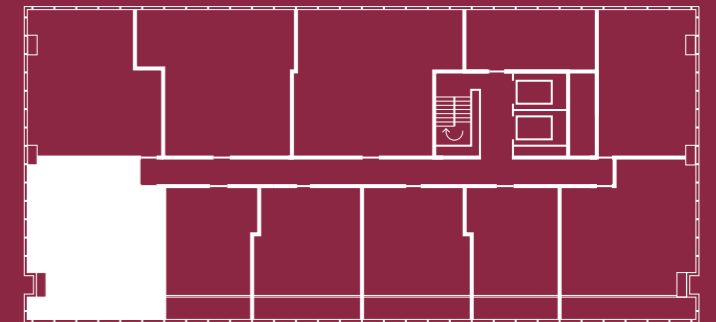
2 Bedroom, 2 Bathroom apartment, with South facing internal terrace and views South & West.  
Levels 25 - 41

## Key to Floorplates

Levels 38 - 41  
Apartments 3807 - 4107



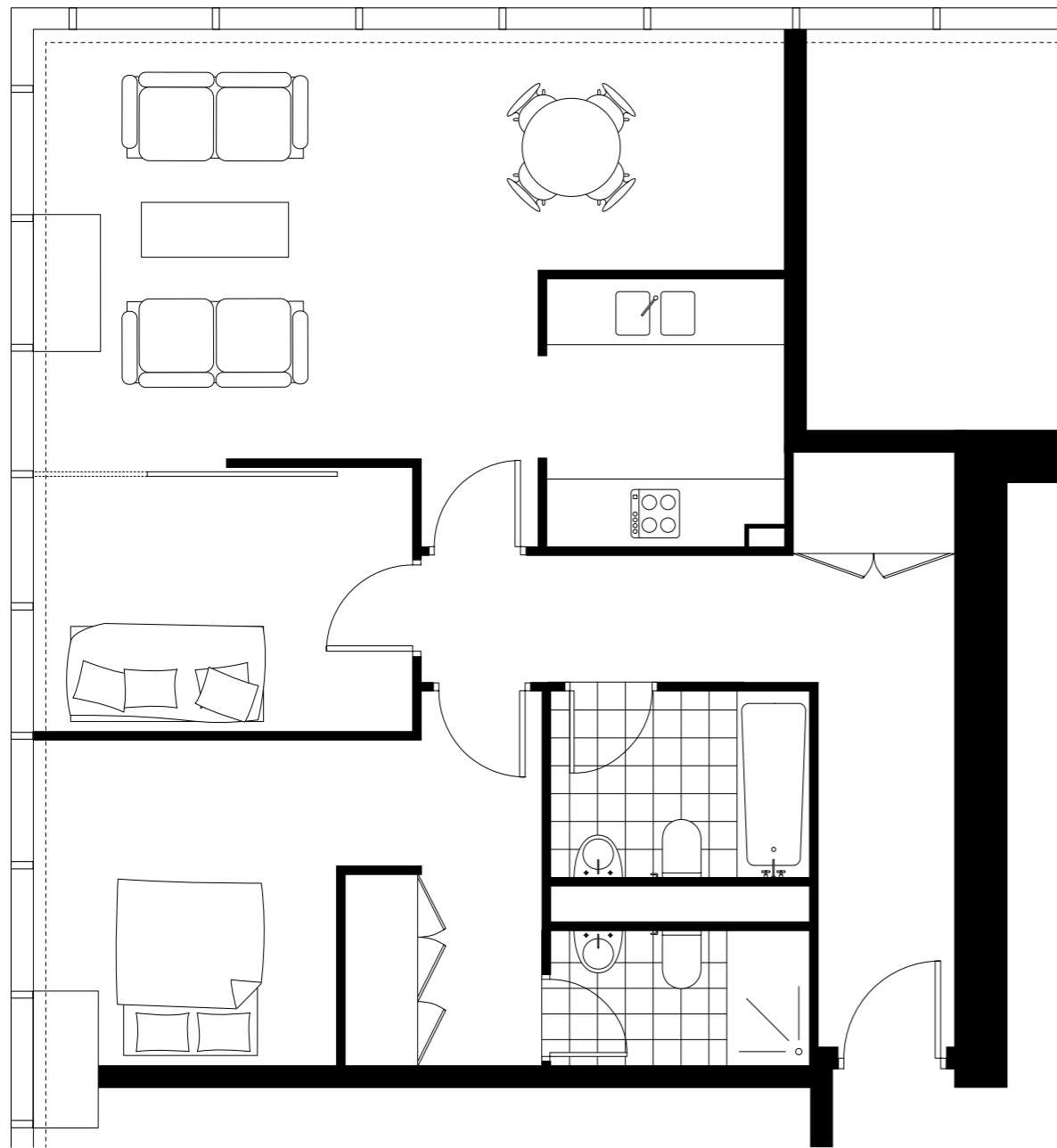
Levels 25 - 37  
Apartments 2508 - 3708



## Apartment Schedule

Living & Dining	5.9m x 3.8m	19' 04" x 12' 06"
Kitchen	3.4m x 2.1m	11' 02" x 06' 11"
Main Bedroom	4.6m x 2.7m	15' 01" x 08' 10"
En-Suite	2.4m x 1.2m	07' 10" x 03' 11"
Bedroom 2	2.5m x 3.8m	08' 02" x 12' 06"
Bathroom 2	2.5m x 1.7m	08' 02" x 05' 07"
Terrace	8.7m x 1.5m	28' 07" x 04' 11"

## Beetham Tower 2 Bedroom Apartment

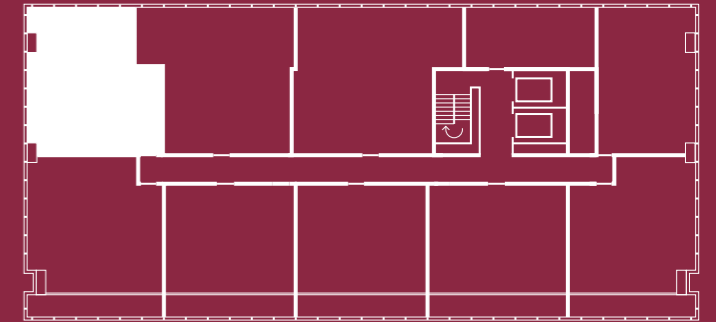


### 2 Bed Apartment

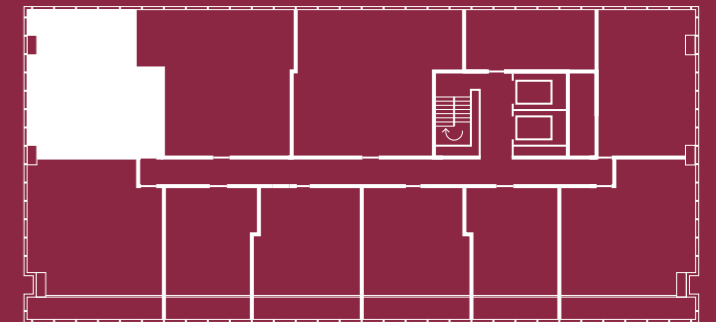
2 Bedroom, 2 Bathroom apartment, with views West, and North over Manchester City Centre.  
Levels 25 - 41

## Key to Floorplates

Levels 38 - 41  
Apartments 3808 - 4108



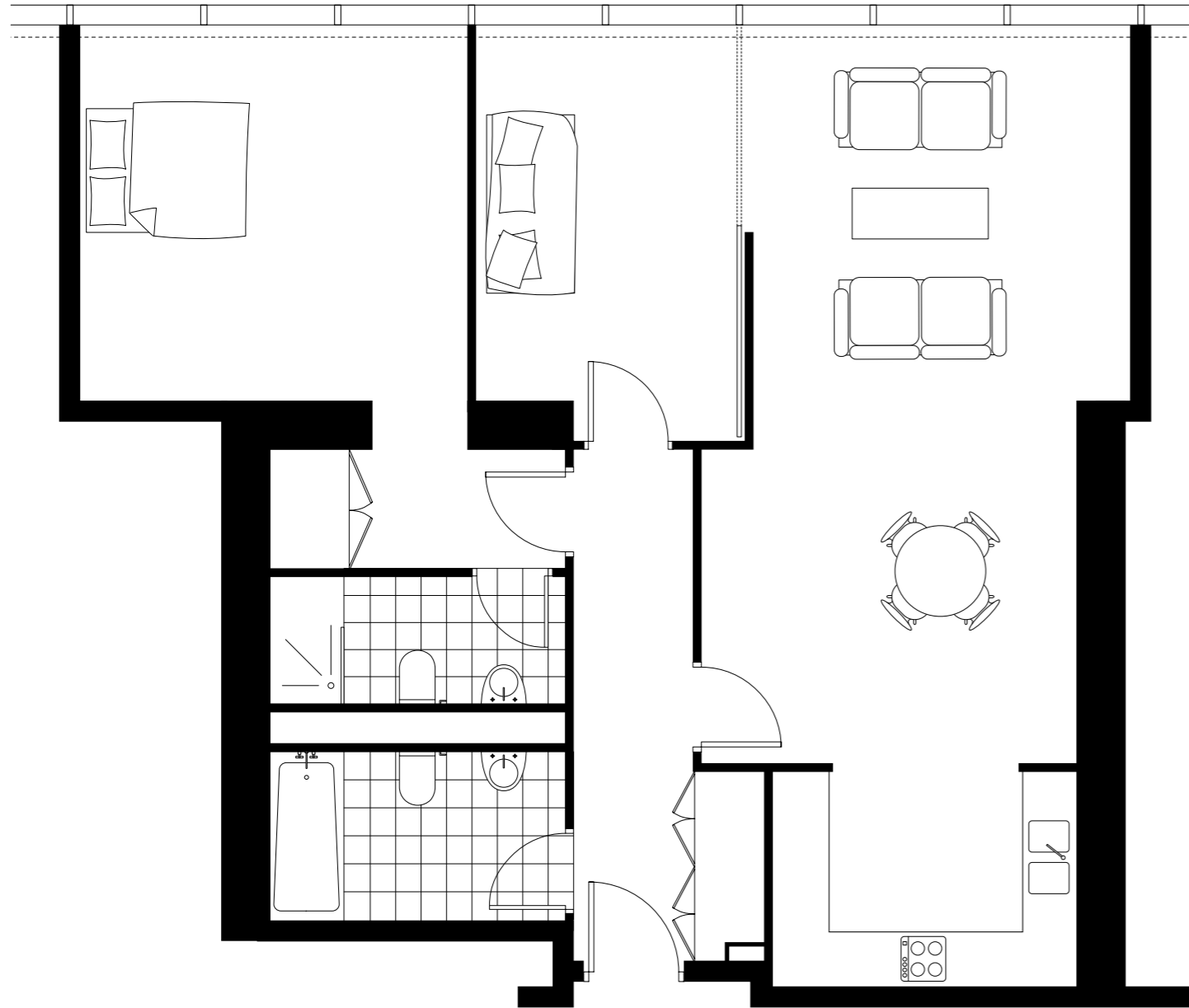
Levels 25 - 37  
Apartments 2509 - 3709



## Apartment Schedule

Living & Dining	6.9m x 4.0m	22' 08" x 13' 01"
Kitchen	2.3m x 2.5m	07' 07" x 08' 02"
Main Bedroom	4.8m x 3.0m	15' 09" x 09' 10"
En-Suite	2.4m x 1.2m	07' 10" x 03' 11"
Bedroom 2	3.4m x 2.4m	11' 02" x 07' 10"
Bathroom 2	2.4m x 1.7m	07' 10" x 05' 07"

## Beetham Tower 2 Bedroom Apartment

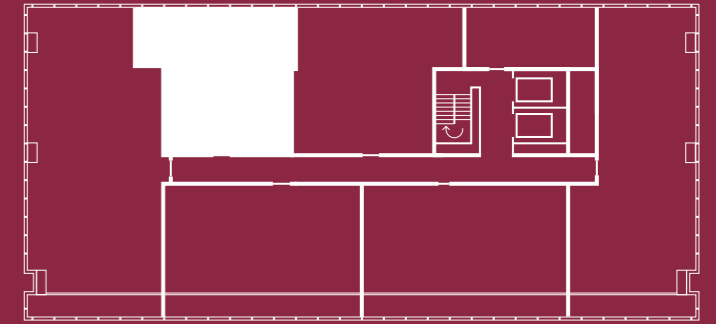


### 2 Bed Apartment

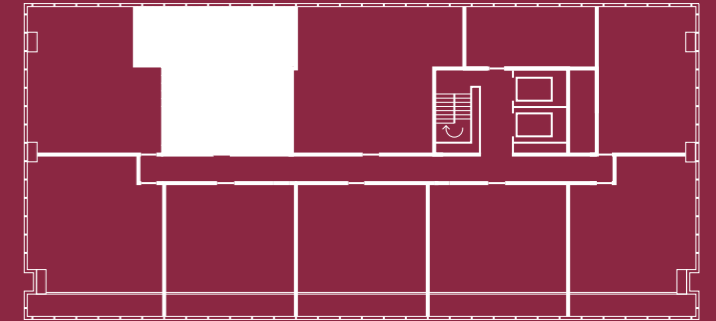
2 Bedroom, 2 Bathroom apartment, North facing with views over Manchester City Centre.  
Levels 25 - 46

## Key to Floorplates

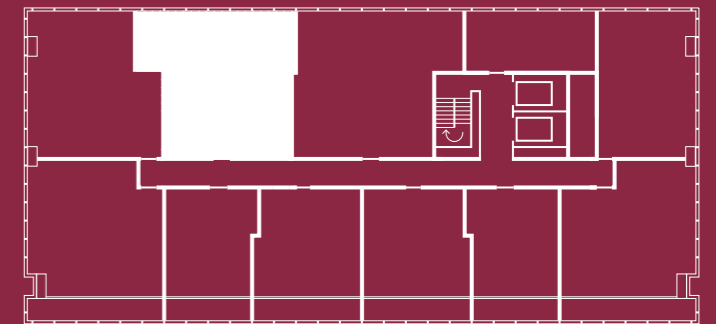
Levels 42 - 46  
Penthouses 4206 - 4606



Levels 38 - 41  
Apartments 3809 - 4109



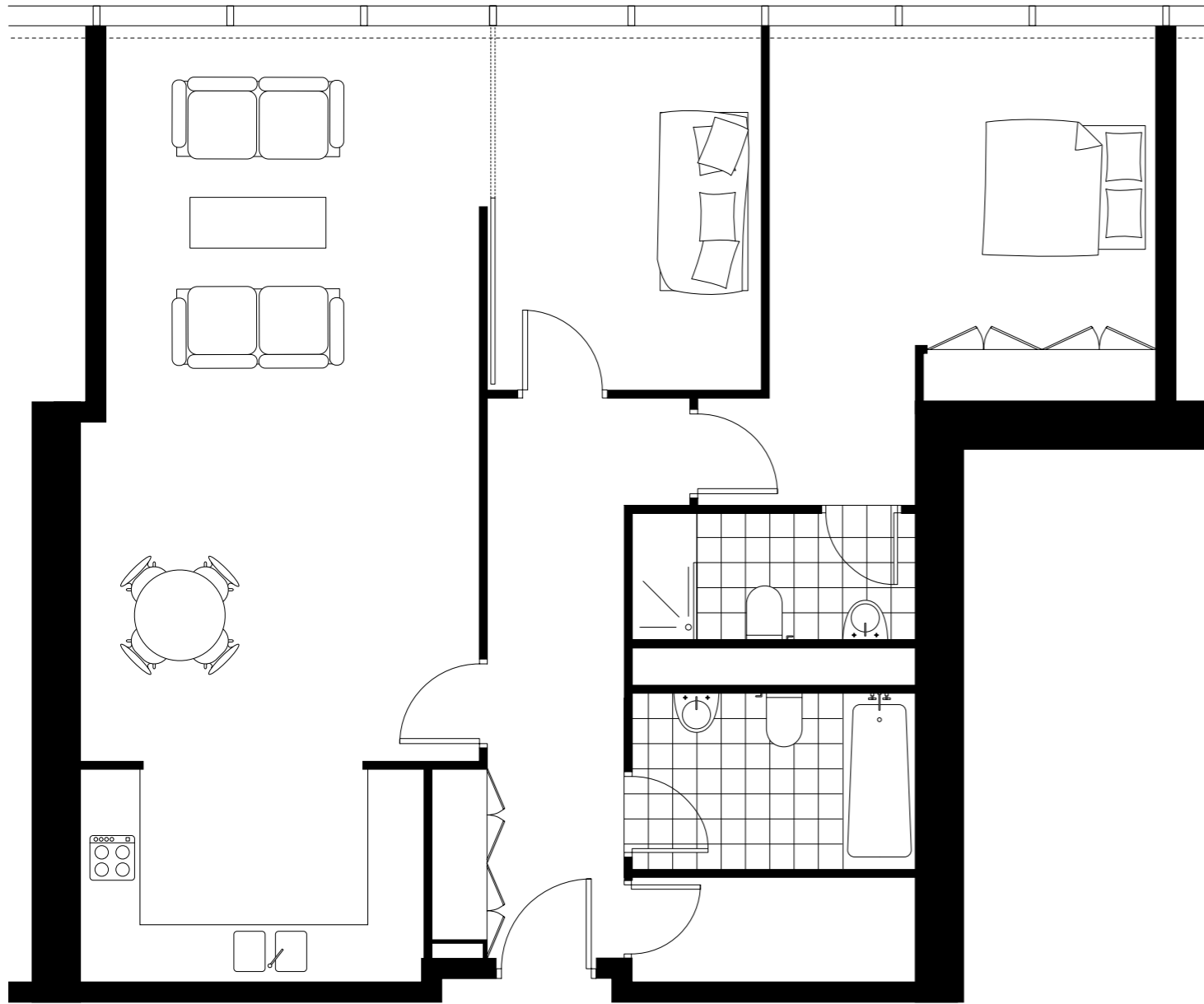
Levels 25 - 37  
Apartments 2510 - 3710



## Apartment Schedule

Living & Dining	3.7m x 7.1m	12' 02" x 23' 04"
Kitchen	3.1m x 2.4m	10' 02" x 07' 10"
Main Bedroom	3.9m x 3.7m	12' 10" x 12' 02"
Dressing	2.8m x 1.0m	09' 02" x 03' 03"
En-Suite	2.9m x 1.2m	09' 06" x 03' 11"
Bedroom 2	2.7m x 4.2m	08' 10" x 13' 09"
Bathroom 2	2.9m x 1.7m	09' 06" x 05' 07"

## Beetham Tower 2 Bedroom Apartment

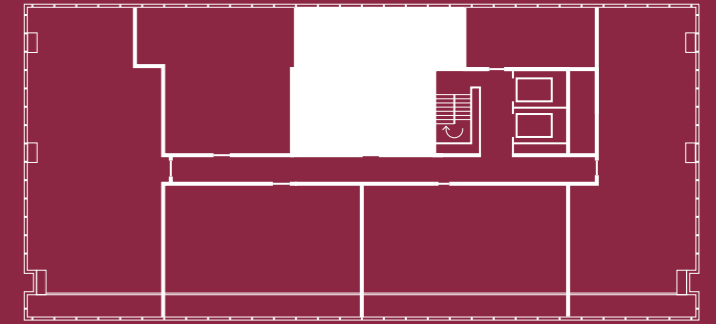


### 2 Bed Apartment

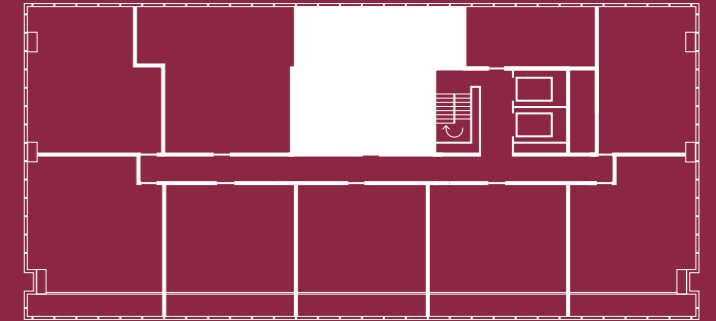
2 Bedroom, 2 Bathroom apartment, North facing with views over Manchester City Centre.  
Levels 25 - 46

## Key to Floorplates

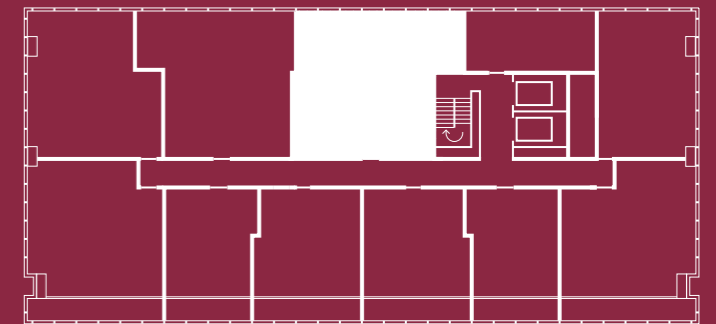
Levels 42 - 46  
Penthouses 4207 - 4607



Levels 38 - 41  
Apartments 3810 - 4110



Levels 25 - 37  
Apartments 2511 - 3711



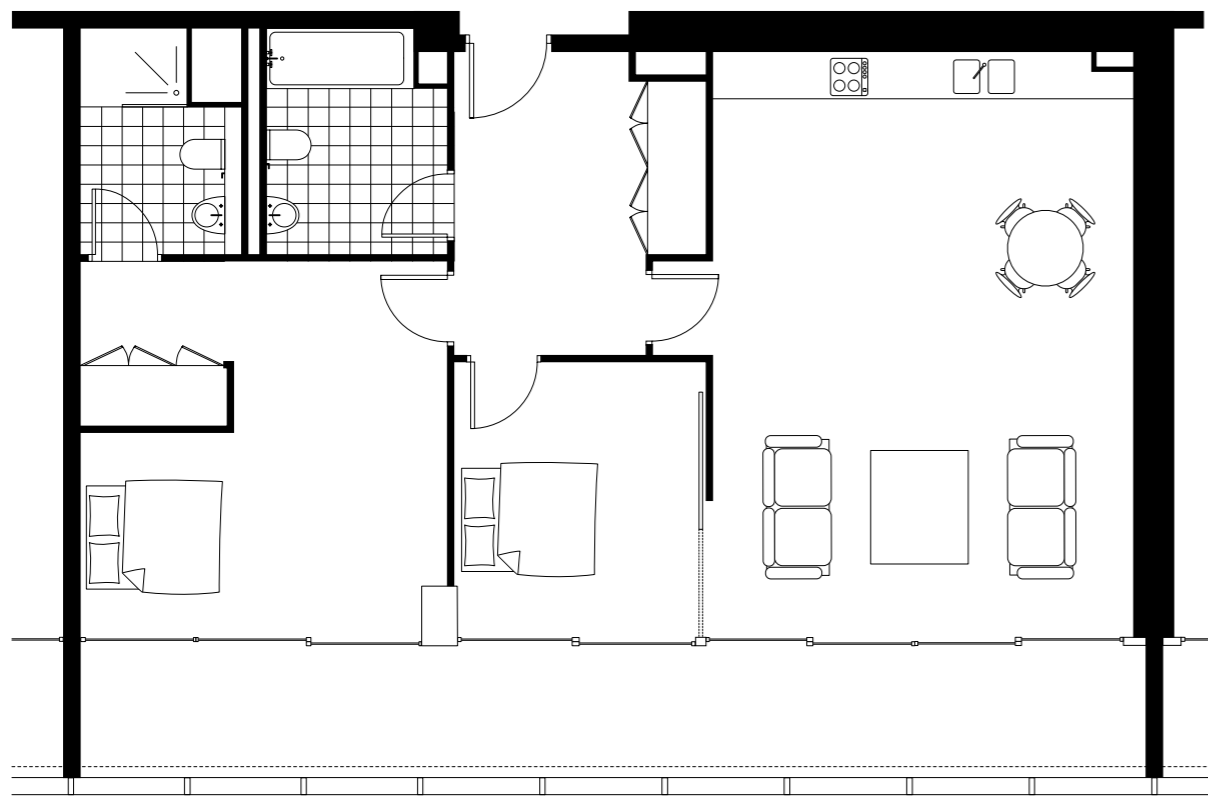
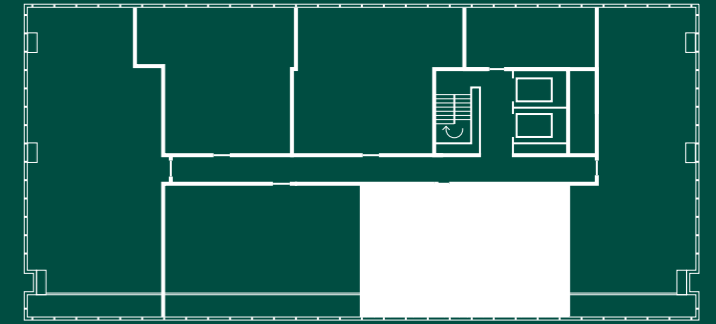
## Apartment Schedule

Living & Dining	3.9m x 7.1m	12' 10" x 23' 04"
Kitchen	3.3m x 2.4m	10' 10" x 07' 10"
Main Bedroom	3.9m x 3.7m	12' 10" x 12' 02"
En-Suite	2.9m x 1.2m	09' 06" x 03' 11"
Bedroom 2	2.7m x 3.7m	08' 10" x 12' 02"
Bathroom 2	2.9m x 1.7m	09' 06" x 05' 07"

## Beetham Tower 2 Bedroom Penthouse

## Key to Floorplates

Levels 42 - 46  
Penthouses 4203 - 4603



## 2 Bed Penthouse

2 Bedroom, 2 Bathroom penthouse apartment, South facing with internal terrace.  
Levels 42 - 46

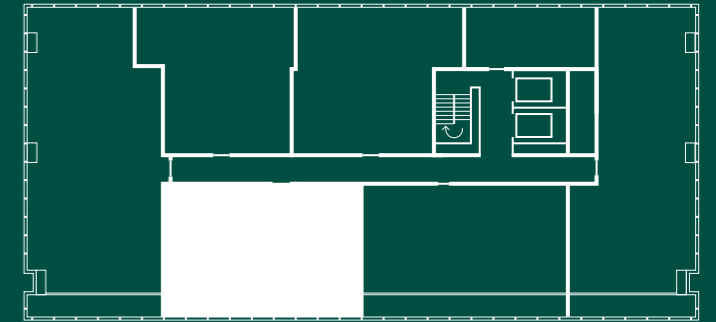
## Apartment Schedule

Living & Kitchen	5.0m x 7.0m	16' 05" x 22' 12"
Main Bedroom	4.4m x 4.7m	14' 05" x 15' 05"
En-Suite	1.9m x 2.4m	06' 03" x 07' 10"
Bedroom 2	3.0m x 3.5m	09' 10" x 11' 06"
Bathroom 2	2.4m x 2.4m	07' 10" x 07' 10"
Terrace	12.8m x 1.5m	41' 12" x 04' 11"

## Beetham Tower 2 Bedroom Penthouse

## Key to Floorplates

Levels 42 - 46  
Penthouses 4204 - 4604



### 2 Bed Penthouse

2 Bedroom, 2 Bathroom penthouse apartment, South facing with internal terrace.  
Levels 42 - 46

## Apartment Schedule

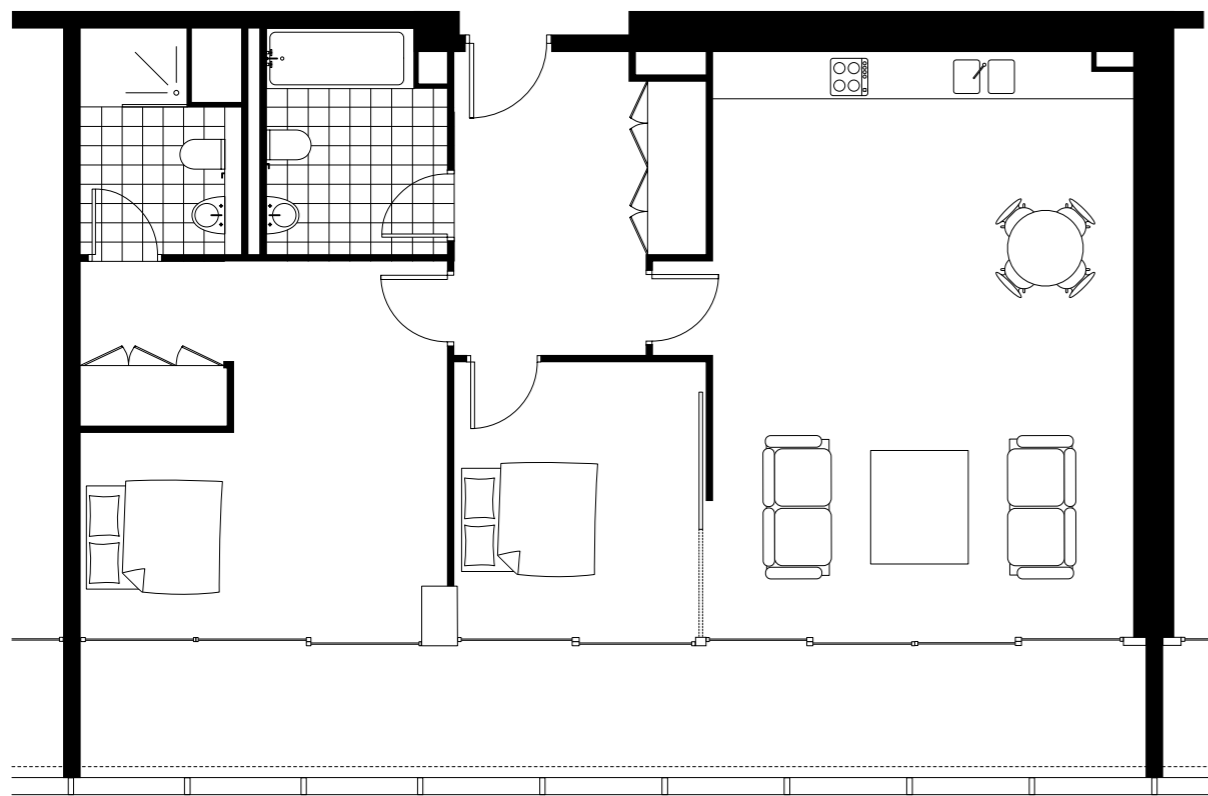
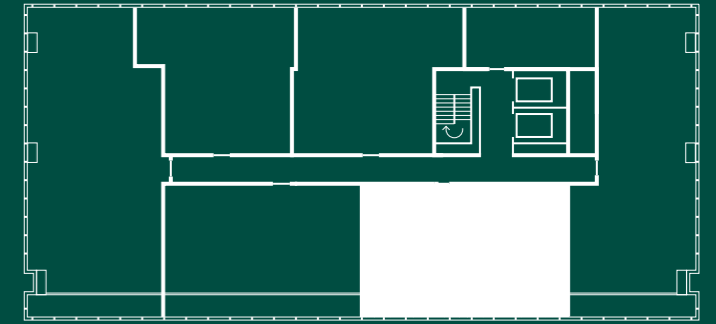
Living & Kitchen	5.0m x 7.0m	16' 05" x 22' 12"
Main Bedroom	4.4m x 4.7m	14' 05" x 15' 05"
En-Suite	1.9m x 2.4m	06' 03" x 07' 10"
Bedroom 2	3.0m x 3.5m	09' 10" x 11' 06"
Bathroom 2	2.4m x 2.4m	07' 10" x 07' 10"
Terrace	12.8m x 1.5m	41' 12" x 04' 11"



## Beetham Tower 2 Bedroom Penthouse

## Key to Floorplates

Levels 42 - 46  
Penthouses 4203 - 4603



## 2 Bed Penthouse

2 Bedroom, 2 Bathroom penthouse apartment, South facing with internal terrace.  
Levels 42 - 46

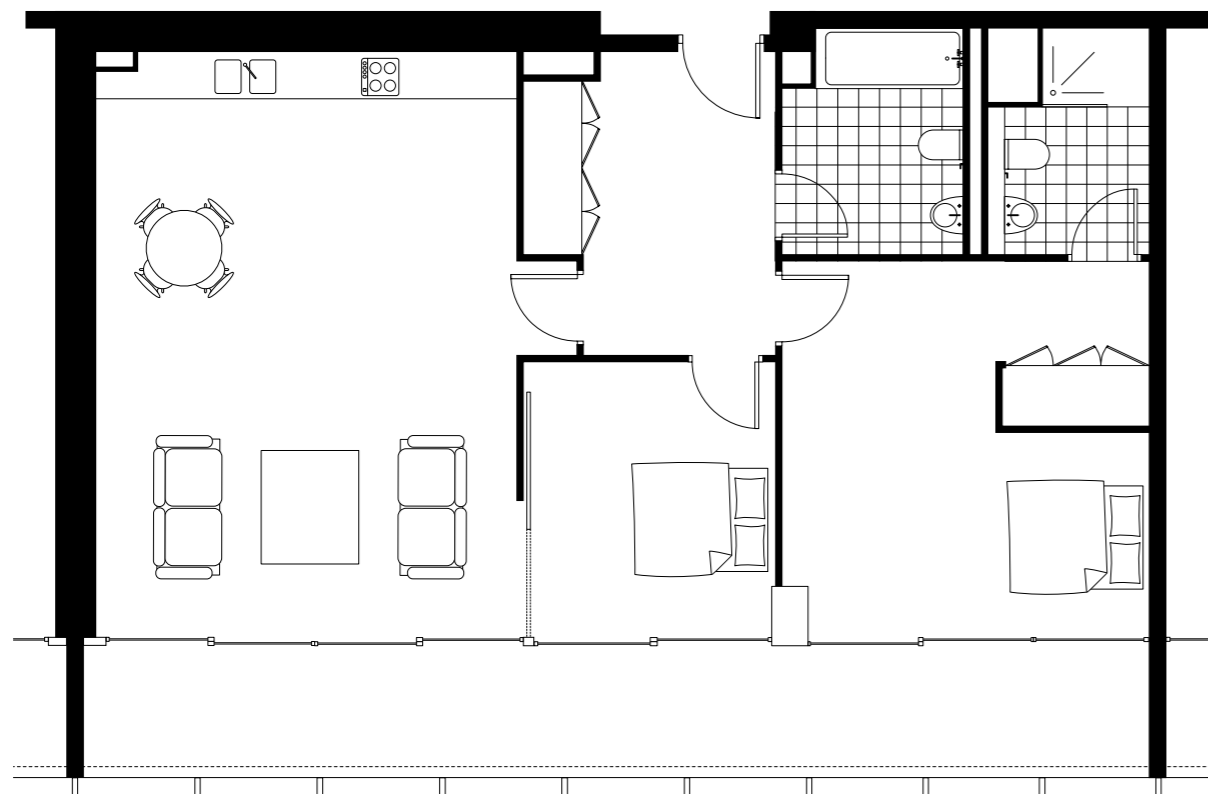
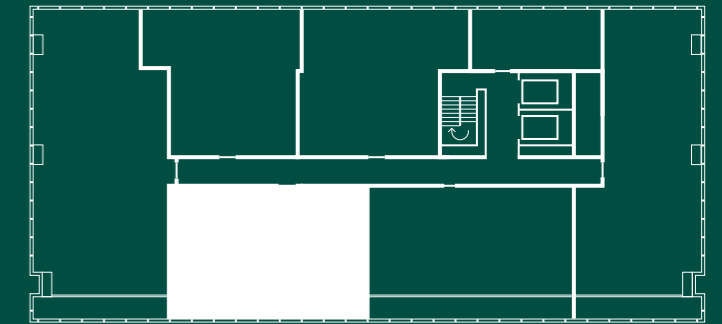
## Apartment Schedule

Living & Kitchen	5.0m x 7.0m	16' 05" x 22' 12"
Main Bedroom	4.4m x 4.7m	14' 05" x 15' 05"
En-Suite	1.9m x 2.4m	06' 03" x 07' 10"
Bedroom 2	3.0m x 3.5m	09' 10" x 11' 06"
Bathroom 2	2.4m x 2.4m	07' 10" x 07' 10"
Terrace	12.8m x 1.5m	41' 12" x 04' 11"

## Beetham Tower 2 Bedroom Penthouse

## Key to Floorplates

Levels 42 - 46  
Penthouses 4204 - 4604



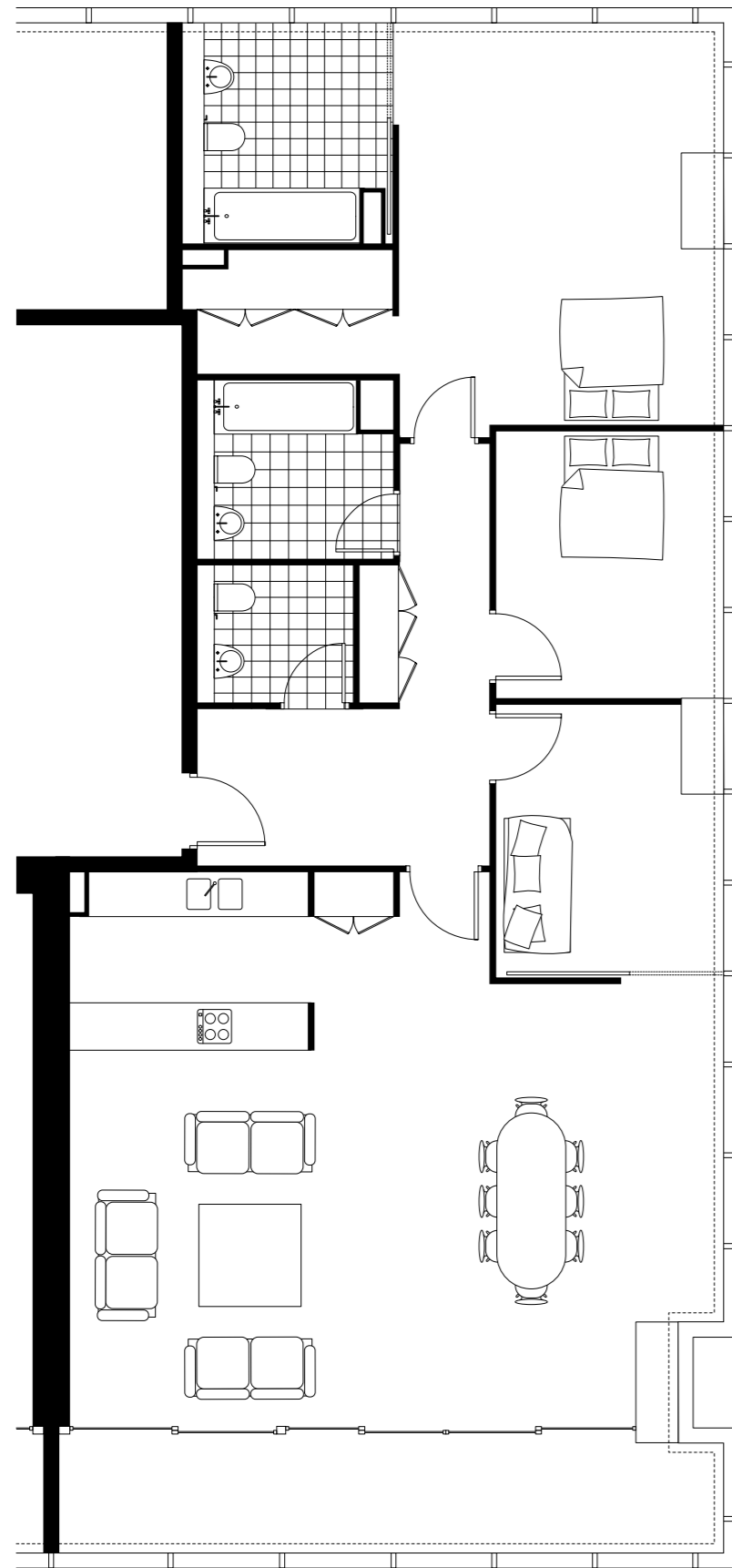
## 2 Bed Penthouse

2 Bedroom, 2 Bathroom penthouse apartment, South facing with internal terrace.  
Levels 42 - 46

## Apartment Schedule

Living & Kitchen	5.0m x 7.0m	16' 05" x 22' 12"
Main Bedroom	4.4m x 4.7m	14' 05" x 15' 05"
En-Suite	1.9m x 2.4m	06' 03" x 07' 10"
Bedroom 2	3.0m x 3.5m	09' 10" x 11' 06"
Bathroom 2	2.4m x 2.4m	07' 10" x 07' 10"
Terrace	12.8m x 1.5m	41' 12" x 04' 11"

## Beetham Tower 3 Bedroom Penthouse

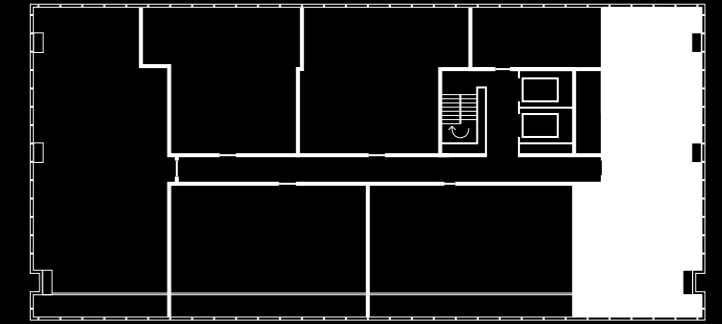


### 3 Bed Penthouse

3 Bedroom, 3 Bathroom penthouse apartment, with views North and East over Manchester city centre and South with internal terrace.

Levels 42 - 46

## Key to Floorplates

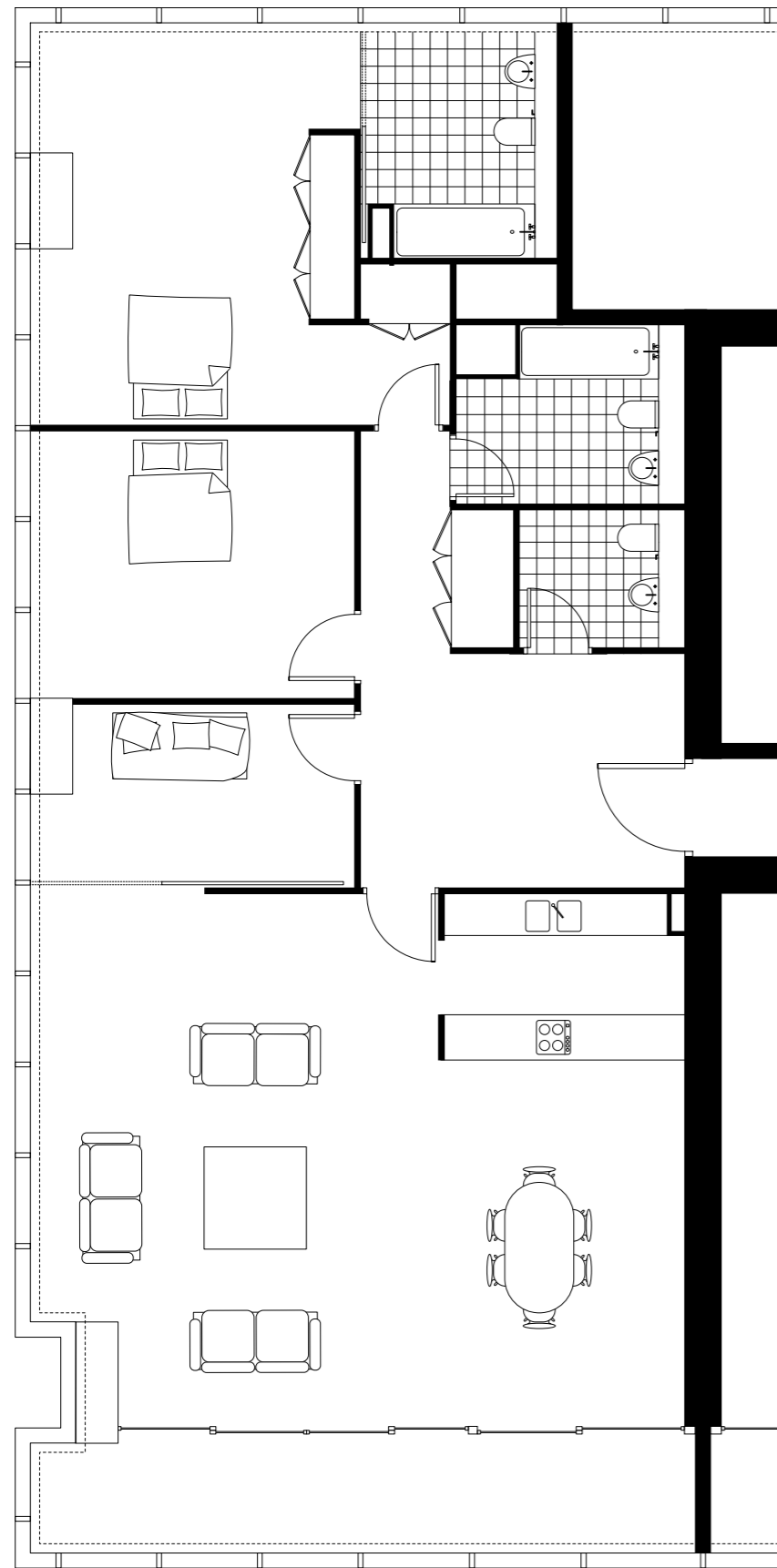


Levels 42 - 46  
Penthouses 4202 - 4602

## Apartment Schedule

Living & Kitchen	8.5m x 7.2m	27' 11" x 23' 07"
Main Bedroom	4.2m x 5.3m	13' 09" x 17' 05"
Dressing	2.3m x 1.5m	07' 07" x 04' 11"
En-Suite	2.2m x 2.8m	07' 03" x 09' 02"
Bedroom 2	2.9m x 3.5m	09' 06" x 11' 06"
Bathroom 2	2.0m x 2.5m	06' 07" x 08' 02"
Bedroom 3	2.9m x 3.6m	09' 06" x 11' 10"
WC	1.4m x 1.9m	04' 07" x 06' 03"
Terrace	8.7m x 1.5m	28' 07" x 04' 11"

## Beetham Tower 3 Bedroom Penthouse

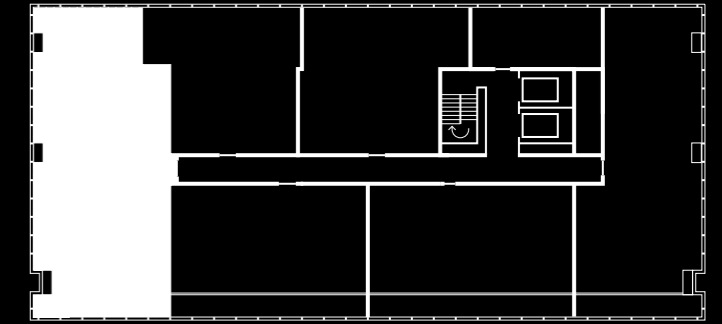


### 3 Bed Penthouse

3 Bedroom, 3 Bathroom penthouse apartment, with views West, North over Manchester city centre and South with internal terrace.

Levels 42 - 46

## Key to Floorplates



Levels 42 - 46  
Penthouses 4205 - 4605

## Apartment Schedule

Living & Kitchen	8.5m x 7.0m	27' 11" x 22' 12"
Main Bedroom	4.3m x 5.3m	14' 01" x 17' 05"
En-Suite	2.2m x 3.2m	07' 03" x 10' 06"
Bedroom 2	4.3m x 3.5m	14' 01" x 11' 06"
Bathroom 2	2.5m x 2.4m	08' 02" x 07' 10"
Bedroom 3	4.3m x 2.4m	14' 01" x 07' 10"
WC	1.9m x 1.7m	06' 03" x 05' 07"
Terrace	8.7m x 1.5m	28' 07" x 04' 11"